

The image shows a page from an antique music manuscript book. The page is filled with ten sets of five-line musical staves, arranged vertically. Each staff is drawn with thin, reddish-brown lines. The paper is aged and yellowed, with some foxing and small dark spots scattered across the surface. On the left side, the binding of the book is visible, showing the stitching and a small piece of white thread. The overall appearance is that of a well-preserved but old historical document.

Secondo.

Da
io.

Handwritten musical notation for the first system, consisting of two staves with treble clefs and a common time signature. The notation includes various note values, rests, and dynamic markings such as 'p' and 'pp'.

Handwritten musical notation for the second system, consisting of two staves. The upper staff features chords with 'collo' markings, and the lower staff contains a melodic line with 'pp' dynamic marking.

Handwritten musical notation for the third system, consisting of two staves. The upper staff has chords with 'collo' markings, and the lower staff has a melodic line with 'pp' dynamic marking.

Empty musical staves at the bottom of the page.

Adagio

Soprano

in 8va

S. 9

Handwritten musical notation for the first system, featuring a grand staff with treble and bass clefs. The music includes complex chords and melodic lines, with dynamic markings such as *ff* and *p*.

Handwritten musical notation for the second system, continuing the piece with similar complex textures and dynamic markings.

Diminuendo

Handwritten musical notation for the third system, marked *Diminuendo*. The notation shows a gradual decrease in volume, with complex chordal structures and melodic fragments.

in g^{oa}

loto

fp

fp

fp

fp

fp

fp

p

Diminuendo.

in g^{oa}

fp

p

p

Handwritten musical score for piano, first system. The system consists of two staves. The upper staff is in treble clef and contains a series of chords and melodic fragments, with dynamic markings *fp*, *pp*, *pp*, *pp*, *pp*, and *pp*. The lower staff is in bass clef and contains a simple melodic line. A *Dimin.* marking is present above the upper staff.

All^o
iusto.

Handwritten musical score for piano, second system. The system consists of two staves. The upper staff is in treble clef and contains a series of chords, with a *pp* marking. The lower staff is in bass clef and contains a simple melodic line.

Handwritten musical score for piano, third system. The system consists of two staves. The upper staff is in treble clef and contains a series of chords, with a *pp* marking. The lower staff is in bass clef and contains a simple melodic line.

loco
fp
Dimin.
pp
pp
pp

All^o
giusto
pp

Handwritten musical notation for the first system. It consists of two staves joined by a brace on the left. The upper staff is in treble clef and the lower staff is in bass clef. The music begins with a treble clef and a key signature of one sharp (F#). The first four measures contain complex, multi-measure chords with many notes. The fifth measure contains a treble clef, a key signature change to one flat (Bb), and a dynamic marking of *pp* (pianissimo). The final two measures show a melodic line in the treble staff and a single note in the bass staff.

Handwritten musical notation for the second system. It consists of two staves joined by a brace on the left. The upper staff is in treble clef and the lower staff is in bass clef. The music begins with a treble clef and a key signature of one sharp (F#). The first measure contains a treble clef, a key signature change to one flat (Bb), and a dynamic marking of *mp* (mezzo-piano). The rest of the system is filled with a steady, rhythmic pattern of eighth notes in both staves.

Handwritten musical notation for the third system. It consists of two staves joined by a brace on the left. The upper staff is in treble clef and the lower staff is in bass clef. The music begins with a treble clef and a key signature of one flat (Bb). The system continues with a steady, rhythmic pattern of eighth notes in both staves. The final measure of the system features a dynamic marking of *f* (forte).

Handwritten musical notation for the first system. The right hand part features complex chordal textures with many notes beamed together. The left hand part has a more melodic line. A *Crescendo* marking is present in the right hand.

Handwritten musical notation for the second system, continuing the piece with similar complex textures in both hands.

Handwritten musical notation for the third system, concluding with a double bar line and a large flourish.

The first system of handwritten musical notation consists of two staves. The upper staff is in treble clef and contains a sequence of notes: a quarter rest, a quarter note, a half note, and a quarter note, followed by a series of eighth notes. The lower staff is in bass clef and contains a series of chords, primarily triads, with some eighth notes interspersed. The notation is in brown ink on aged paper.

The second system of handwritten musical notation consists of two staves. The upper staff is in treble clef and features a melodic line with eighth notes and a dynamic marking 'p.' (piano). The lower staff is in bass clef and contains a series of chords and some eighth notes. The notation is in brown ink on aged paper.

The third system of handwritten musical notation consists of two staves. The upper staff is in treble clef and contains a melodic line with eighth notes and a dynamic marking 'p.' (piano). The lower staff is in bass clef and contains a series of chords and some eighth notes. The notation is in brown ink on aged paper.

Handwritten musical notation for the first system, consisting of two staves. The upper staff features a melodic line with various ornaments and slurs, while the lower staff provides a rhythmic accompaniment with chords and single notes. Dynamics markings 'p' and 'fp' are present.

Handwritten musical notation for the second system, consisting of two staves. The notation includes a 'tr' (trill) marking above the first note of the upper staff. The music continues with similar melodic and accompanimental patterns.

Handwritten musical notation for the third system, consisting of two staves. It begins with the instruction 'in gva' and 'aloco' above the first notes. The system concludes with a large, decorative flourish or signature.

Handwritten musical notation on a grand staff, first system. The upper staff contains a melodic line with slurs and a *pp* dynamic marking. The lower staff contains a bass line with slurs and a *pp* dynamic marking.

Handwritten musical notation on a grand staff, second system. The upper staff contains a melodic line with slurs and a *pp* dynamic marking. The lower staff contains a bass line with slurs and a *pp* dynamic marking.

Handwritten musical notation on a grand staff, third system. The upper staff contains a melodic line with slurs and a *pp* dynamic marking. The lower staff contains a bass line with slurs and a *pp* dynamic marking.

Empty grand staff lines at the bottom of the page.

Handwritten musical notation for the first system, consisting of two staves. The top staff features a treble clef, a key signature of one sharp (F#), and a complex melodic line with many beamed notes and slurs. The bottom staff features a bass clef and a more rhythmic accompaniment with slurs and rests. A 'pp' dynamic marking is present at the beginning of the bottom staff.

Handwritten musical notation for the second system, consisting of two staves. The notation continues from the first system, with similar melodic and accompanimental patterns. The top staff has a treble clef and the bottom staff has a bass clef.

Handwritten musical notation for the third system, consisting of two staves. The notation is less dense than the previous systems, with fewer notes and more rests. A large, stylized signature or flourish is written across the middle of the system, overlapping both staves.

Handwritten musical score system 1. It consists of two staves joined by a brace on the left. The upper staff is in treble clef and contains a series of chords and notes, with a long slur over the final portion. The lower staff is in bass clef and contains a series of chords and notes. The word *decresc.* is written below the lower staff, and the word *bis* is written above the upper staff.

Handwritten musical score system 2. It consists of two staves joined by a brace on the left. The upper staff is in treble clef and contains a series of notes and rests. The lower staff is in bass clef and contains a series of notes and rests. The word *pp* is written below the lower staff.

Handwritten musical score system 3. It consists of two staves joined by a brace on the left. The upper staff is in treble clef and contains a series of chords and notes. The lower staff is in bass clef and contains a series of chords and notes. The word *decresc.* is written below the lower staff.

Handwritten musical notation for the first system, featuring two staves with treble clefs. The notation includes notes, rests, and slurs. There are markings for triplets and the instruction "in g^{ua}".

Handwritten musical notation for the second system, featuring two staves with treble clefs. The notation includes notes, rests, and slurs. There are markings for triplets and the instruction "in g^{ua}".

Handwritten musical notation for the third system, featuring two staves with treble clefs. The notation includes notes, rests, and slurs. There are markings for triplets and the instruction "in g^{ua}".

gl.

Handwritten musical notation on two staves. The top staff begins with a treble clef and a key signature of one sharp (F#). The bottom staff begins with a bass clef and the same key signature. The music consists of several measures with various rhythmic values, including eighth and sixteenth notes, and rests. The notation is dense and characteristic of 18th-century manuscript notation.

Handwritten musical notation on two staves, continuing the piece. The notation features treble and bass clefs, a key signature of one sharp, and complex rhythmic patterns with many beamed notes and rests. The handwriting is consistent with the first system.

Handwritten musical notation on two staves, showing further development of the musical piece. The notation includes treble and bass clefs, a key signature of one sharp, and intricate rhythmic structures with many beamed notes and rests. The handwriting remains consistent throughout the page.

in g^{ua}

piano

in g^{ua}

loco

Handwritten musical notation on two staves. The top staff begins with a treble clef and a key signature of one sharp (F#). It contains several measures of music, including a measure with a fermata and the dynamic marking *pp*. The bottom staff begins with a bass clef and contains several measures of music, including a measure with a fermata and the dynamic marking *pp*.

Handwritten musical notation on two staves. The top staff continues with a treble clef and a key signature of one sharp (F#). The bottom staff continues with a bass clef. Both staves contain several measures of music.

Handwritten musical notation on two staves. The top staff begins with a treble clef and a key signature of one sharp (F#). The bottom staff begins with a bass clef. Both staves contain several measures of music.

Four empty musical staves at the bottom of the page.

Handwritten musical notation on two staves. The top staff begins with a treble clef and contains several measures of music, including a dynamic marking *pp* and a slur over a group of notes. The bottom staff begins with a bass clef and contains corresponding notes and rests.

Handwritten musical notation on two staves. The top staff continues the melodic line with various note values and slurs. The bottom staff provides the bass accompaniment with rests and notes.

Handwritten musical notation on two staves. The top staff features a complex passage with many beamed notes and slurs. The bottom staff continues the bass line. The system concludes with a large, decorative flourish on the right side.

Handwritten musical notation on a grand staff (treble and bass clefs). The notation includes notes, rests, and dynamic markings. A *ritard.* marking is present above the staff, and a *pp* marking is present below the staff. The music features a melodic line in the treble clef and a supporting bass line in the bass clef.

Handwritten musical notation on a grand staff. This system continues the piece with more complex melodic and harmonic textures. It includes various note values, slurs, and dynamic markings, showing a continuation of the musical ideas from the first system.

Handwritten musical notation on a grand staff. This system concludes the piece with a final melodic phrase and harmonic accompaniment. The notation includes slurs and dynamic markings, leading to a clear ending.

Handwritten musical notation on two staves. The upper staff features a long, sweeping slur over a series of notes, with the word "decresc." written below it. The lower staff contains a melodic line with various note values and rests.

Handwritten musical notation on two staves. The upper staff has a series of notes with slurs and accents. The lower staff has a corresponding melodic line with slurs and accents.

Handwritten musical notation on two staves. The upper staff contains notes with slurs and accents. The lower staff contains a melodic line with slurs and accents. A large flourish is visible on the right side of the lower staff.

Handwritten musical notation on a grand staff. The right hand part consists of complex chordal textures with many notes beamed together. The left hand part has a more rhythmic, bass-line-like quality with some slurs and dynamic markings.

Handwritten musical notation on a grand staff. The right hand part is marked *pp* and features a series of chords. The left hand part has a melodic line with slurs. The word *cresc.* is written above the right hand part.

Handwritten musical notation on a grand staff. The right hand part has a melodic line with slurs and a dynamic marking *p*. The left hand part has a bass line with slurs. The word *And* is written above the right hand part.

Handwritten musical notation on two staves. The top staff uses a treble clef and the bottom staff uses a bass clef. The music consists of several measures with various note values, including eighth and sixteenth notes, and rests. Dynamic markings such as *p* and *mp* are present. There are also some slurs and phrasing marks.

Handwritten musical notation on two staves. The top staff uses a treble clef and the bottom staff uses a bass clef. The notation includes notes, rests, and dynamic markings such as *in gaa* and *cresc*. There are also some slurs and phrasing marks.

Handwritten musical notation on two staves. The top staff uses a treble clef and the bottom staff uses a bass clef. The notation includes notes, rests, and dynamic markings such as *in gaa*, *loco*, and *staccato*. There are also some slurs and phrasing marks.

S. P.

Handwritten musical notation on a grand staff. The upper staff contains a melodic line with quarter and eighth notes. The lower staff contains a bass line with chords and slurs. A handwritten marking "cresc." is written above the first few notes of the upper staff.

Handwritten musical notation on a grand staff. The upper staff contains a melodic line with quarter and eighth notes. The lower staff contains a bass line with chords and slurs. A handwritten marking "cresc." is written above the first few notes of the upper staff. A double bar line is present in the middle of the system.

Handwritten musical notation on a grand staff. The upper staff contains a melodic line with quarter and eighth notes. The lower staff contains a bass line with chords and slurs. A double bar line is present in the middle of the system.

Handwritten musical notation for the first system, consisting of two staves. The upper staff features complex chordal textures with many notes beamed together, while the lower staff has a more melodic line with some rests.

Handwritten musical notation for the second system, consisting of two staves. It includes dynamic markings such as *cresc.* and *in gaa*, and performance instructions like *Loco*. The notation is dense with notes and slurs.

Handwritten musical notation for the third system, consisting of two staves. It features *in gaa* markings and a *p* dynamic marking. The notation continues with complex textures and melodic lines.

8.0

Handwritten musical notation for the first system, consisting of a treble staff and a bass staff. The treble staff contains several measures of music with notes and rests, while the bass staff contains rests in the first three measures followed by notes in the subsequent measures.

Handwritten musical notation for the second system, consisting of a treble staff and a bass staff. The treble staff begins with a *p* dynamic marking and contains notes with slurs. A *cresc.* marking is present in the fifth measure. The bass staff contains notes with slurs throughout the system.

Handwritten musical notation for the third system, consisting of a treble staff and a bass staff. The treble staff begins with a *piu moto* marking and contains notes with slurs. The bass staff contains notes with slurs throughout the system.

in g^o

loco

p

o.c.

piu moto

p

S.C.

Handwritten musical notation on a grand staff. The upper staff is in treble clef and the lower staff is in bass clef. The music features a melodic line in the treble with various ornaments and a bass line with chords and single notes. A dynamic marking 'p' is visible in the first measure.

Handwritten musical notation on a grand staff. The upper staff is in treble clef and the lower staff is in bass clef. The music continues with similar melodic and harmonic patterns, including a dynamic marking 'p' in the first measure.

Handwritten musical notation on a grand staff. The upper staff is in treble clef and the lower staff is in bass clef. The music concludes with a final cadence in the treble and a sustained bass line.

Handwritten musical notation on a grand staff. The upper staff is in treble clef and the lower staff is in bass clef. The music consists of a melodic line in the treble and a bass line in the bass. The notation includes various note values, rests, and dynamic markings such as 'p' (piano). The key signature has two sharps (F# and C#).

Handwritten musical notation on a grand staff, continuing from the first system. It includes the annotation "in gaa" at the beginning. The notation is dense with notes and rests, showing a continuation of the melodic and bass lines.

Handwritten musical notation on a grand staff, continuing from the second system. It includes the annotation "in gaa" at the beginning. The notation concludes with a double bar line and a stylized signature or flourish.

Handwritten musical notation on a grand staff. The system consists of two staves, treble and bass clef. The notation includes various note values, rests, and dynamic markings such as *p* and *f*. The music is written in a cursive, historical style.

Handwritten musical notation on a grand staff. The system consists of two staves, treble and bass clef. The notation includes various note values, rests, and dynamic markings such as *p* and *f*. The music is written in a cursive, historical style.

Handwritten musical notation on a grand staff. The system consists of two staves, treble and bass clef. The notation includes various note values, rests, and dynamic markings such as *p* and *f*. The word *bis* is written above and below the staff. The music is written in a cursive, historical style.

ingua

loco

ingua

ingua

ingua

loco

ingua

S. C.

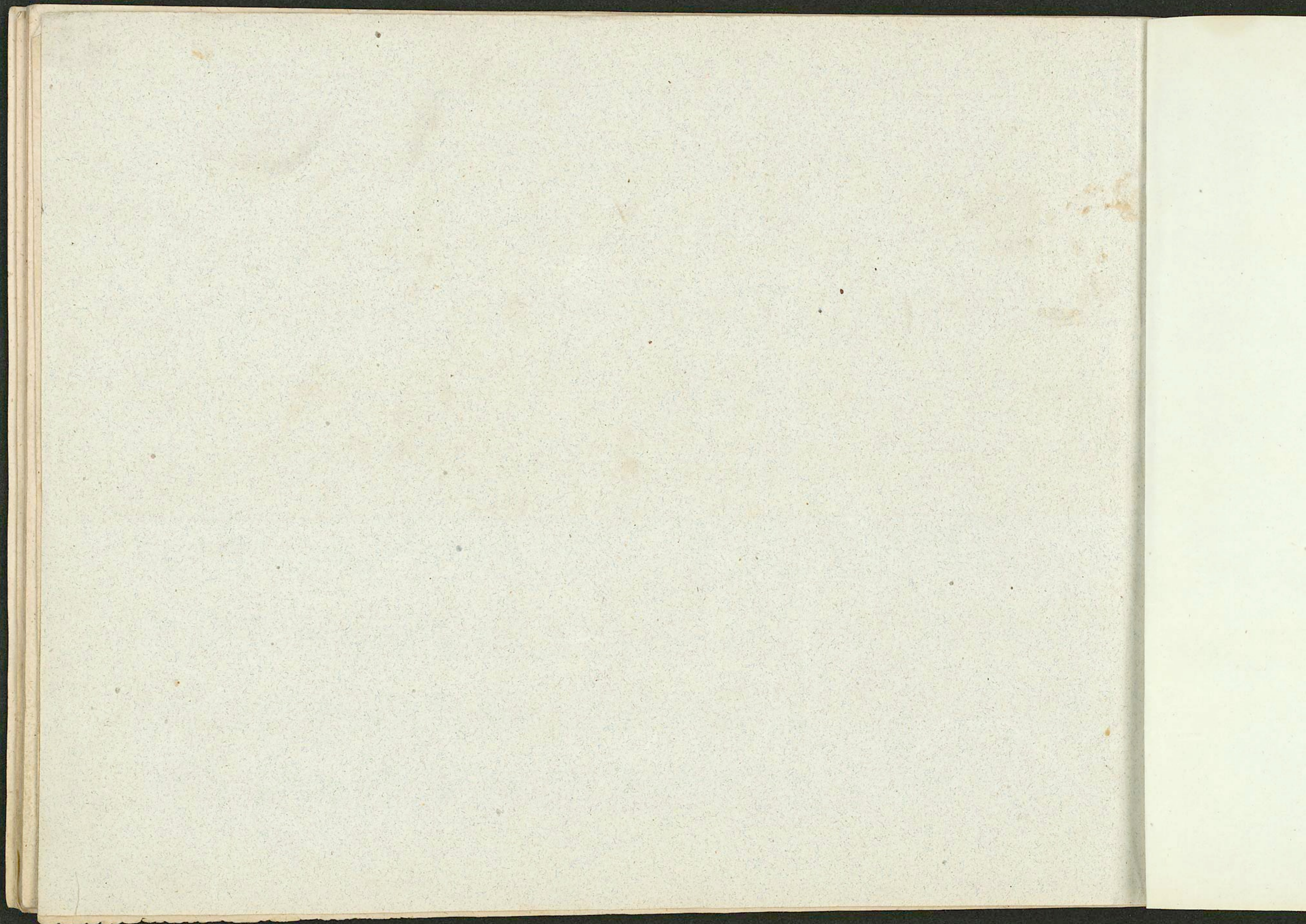
Handwritten musical notation on two staves. The top staff has a treble clef and a single note with a dot. The bottom staff has a bass clef and a series of notes, some with stems and some with dots. There are also some handwritten markings like '3' and '4' between the staves.

Fine.

Handwritten musical notation on two staves. The top staff has a treble clef and a note with a dot. The bottom staff has a bass clef and a note with a dot. There is a blue 'loco' marking above the top staff.

Handwritten musical score for two staves. The top staff begins with the word "loco" and contains several chords and notes. The bottom staff contains chords and notes. A blue scribble is present on the left side of the first two staves. The word "in gva" is written above the top staff, and "loco" is written above the bottom staff.

Fire.



H 161

2
Overture

And

Franz Schubert.

1817.

