

Sept 18. Sunday 8.12 von dem Kirchenratel angefangen 7)

1. Gebung

MH 15.521/C

Conto



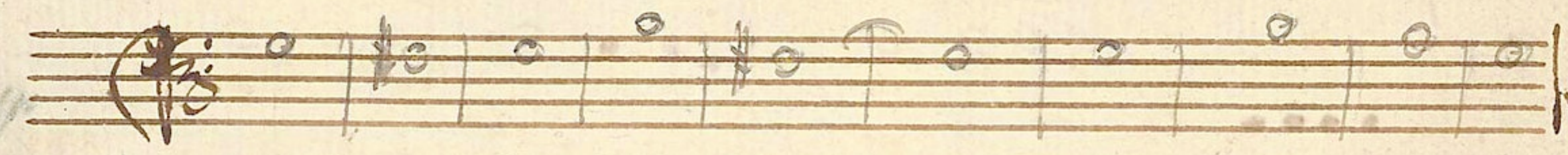
Conto



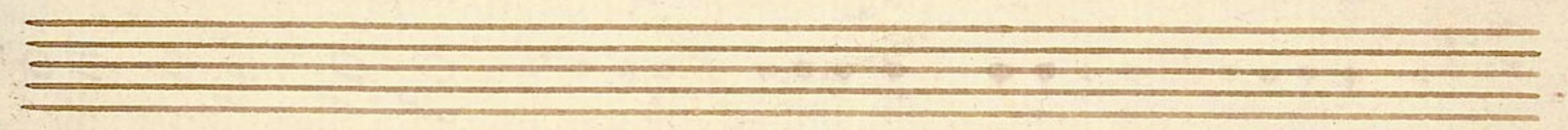
Conto



Conto



Conto



7

Handwritten musical notation on a five-line staff. It begins with a treble clef, a key signature of two sharps (F# and C#), and a common time signature (C). The notation consists of several measures of music, primarily featuring quarter and eighth notes. A dynamic marking 'f.' is written below the first measure.

Handwritten musical notation on a five-line staff. It features a treble clef, a key signature of two sharps, and a common time signature. The notation includes a series of dotted notes and rests. Dynamic markings 'p.' and 'Cresc.' are present.

Handwritten musical notation on a five-line staff. It features a treble clef, a key signature of two sharps, and a common time signature. The notation consists of several measures of music with quarter and eighth notes. A dynamic marking 'f.' is written below the first measure.

Handwritten musical notation on a five-line staff. It features a treble clef, a key signature of two sharps, and a common time signature. The notation consists of a series of dotted notes. A dynamic marking 'p.' is written below the first measure.

Handwritten musical notation on a five-line staff. It features a treble clef, a key signature of two sharps, and a common time signature. The notation includes a series of dotted notes and rests. A dynamic marking 'f.' is written below the first measure.

Handwritten musical notation on a five-line staff. It features a treble clef, a key signature of two sharps, and a common time signature. The notation consists of several measures of music with quarter and eighth notes.

Handwritten musical notation on a five-line staff. It features a treble clef, a key signature of two sharps, and a common time signature. The notation includes a series of dotted notes and rests. A dynamic marking 'p.' is written below the first measure.

Handwritten musical notation on a five-line staff. It features a treble clef, a key signature of two sharps, and a common time signature. The notation consists of several measures of music with quarter and eighth notes. Dynamic markings 'Cresc.' and 'f.' are present.

Handwritten musical notation on a five-line staff. It features a treble clef, a key signature of two sharps, and a common time signature. The notation consists of a series of dotted notes. A dynamic marking 'Cresc.' is written below the first measure.

Handwritten musical notation on a five-line staff. It features a treble clef, a key signature of two sharps, and a common time signature. The notation consists of several measures of music with quarter and eighth notes. A dynamic marking 'f.' is written below the first measure.

Handwritten musical notation on a five-line staff. It features a treble clef, a key signature of two sharps, and a common time signature. The notation includes a series of dotted notes and rests. A dynamic marking 'p.' is written below the first measure.

Handwritten musical notation on a five-line staff. It features a treble clef, a key signature of two sharps, and a common time signature. The notation includes a series of dotted notes and rests. A dynamic marking 'p.' is written below the first measure. The page number '87' is written at the end of the staff.

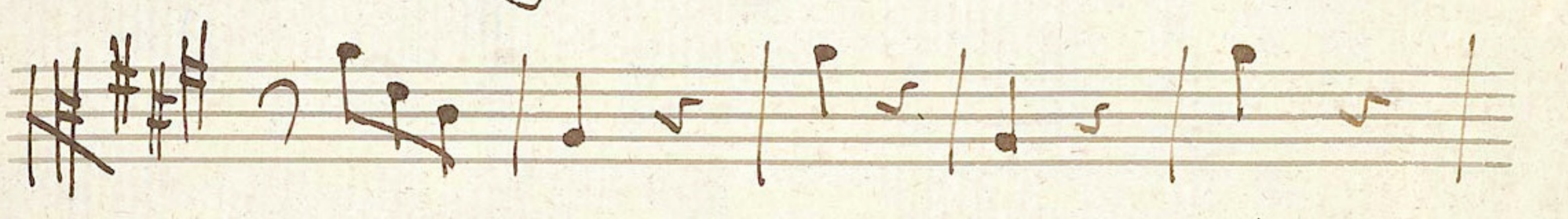
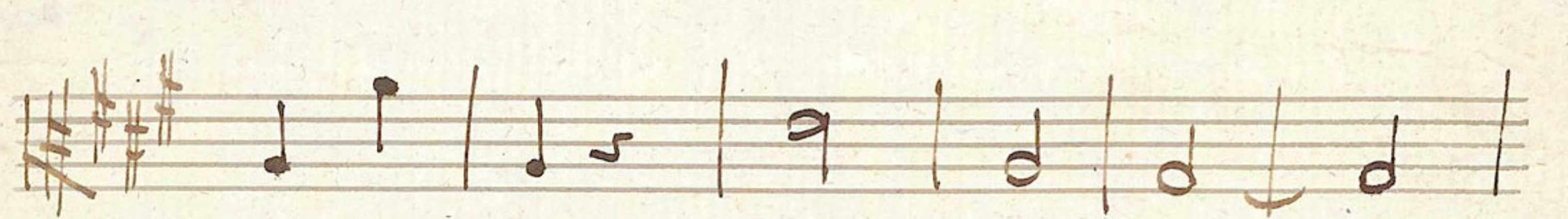
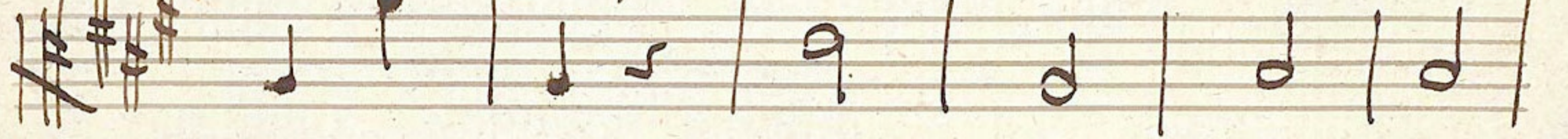
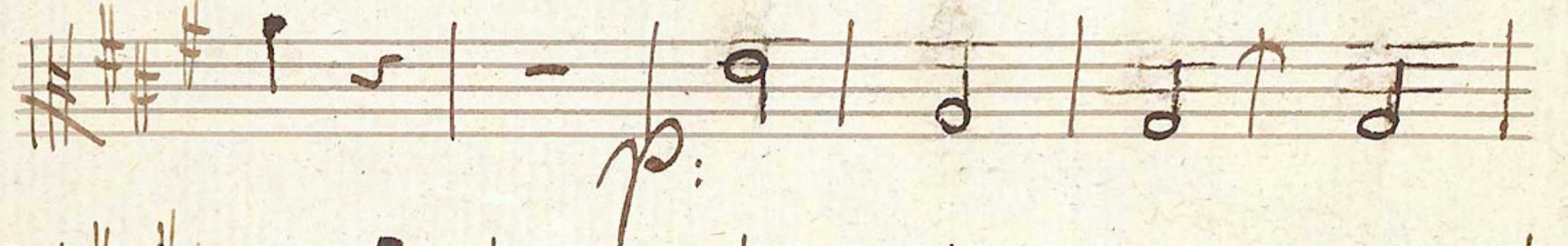
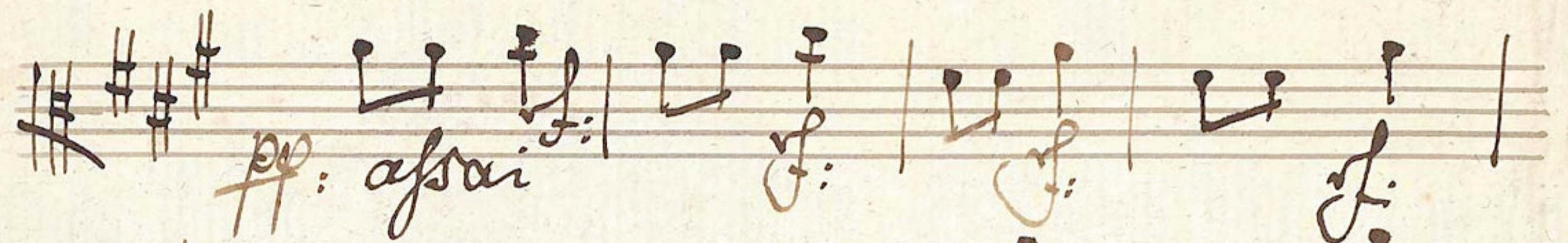
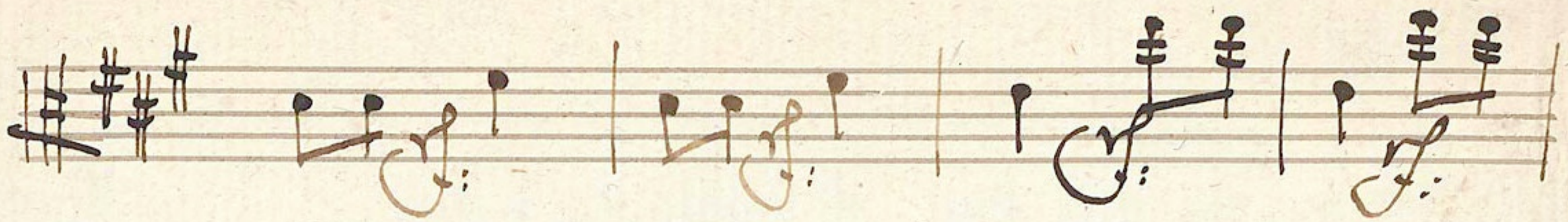


*In der Okt.*

Handwritten musical notation for the first section, "In der Okt.", consisting of four systems of two staves each. The notation includes various note values, rests, and some scribbled-out passages.

*In der Abwärts.*

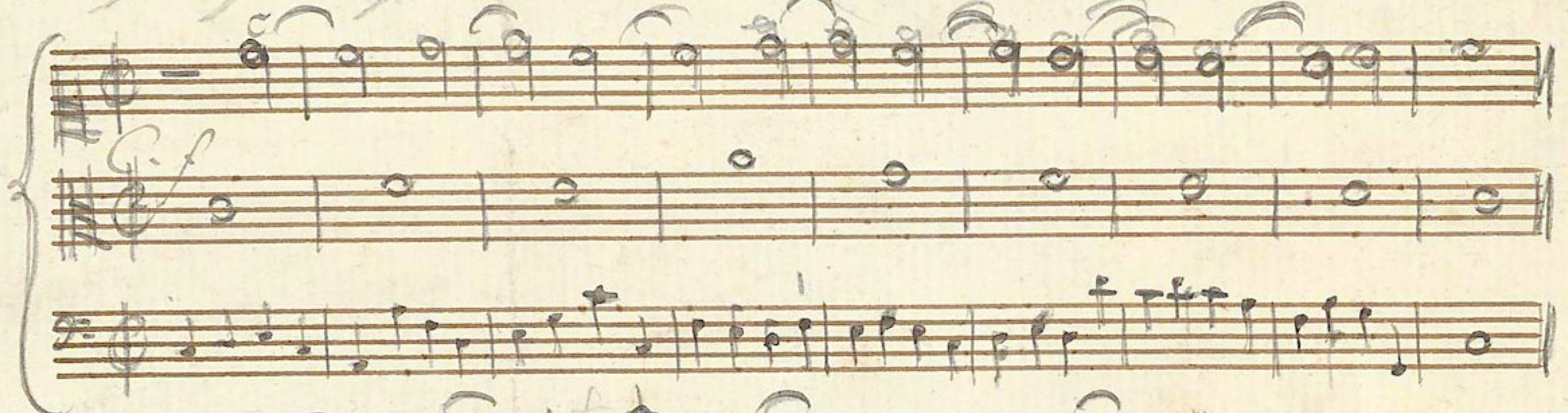
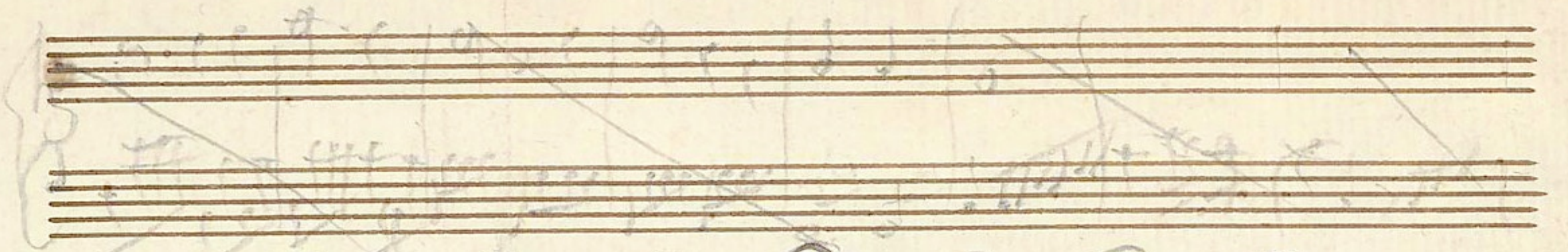
Handwritten musical notation for the second section, "In der Abwärts.", consisting of four systems of two staves each. The tempo marking "Moderato" is written between the second and third systems.



M4-740. 15521



64



Handwritten musical notation on a page with ten staves. The notation is heavily scribbled over with dark ink, making it largely illegible. A large, faint 'X' is drawn across the entire page, crossing through the musical staves. Some faint words and notes are visible through the ink, including "proprio", "poco", "poco", "poco", "poco", "poco", "poco", "poco", "poco", "poco".

M.H. Inv. 15521



zu der Follung.

Therese's Lied.

Handwritten musical score for the first section, 'zu der Follung'. It consists of six staves. The first two staves are a grand staff with treble and bass clefs. The next two staves are a grand staff with treble and bass clefs. The last two staves are a grand staff with treble and bass clefs. The music is written in a simple, early style with various note values and rests.

zu der Follung.

Handwritten musical score for the second section, 'zu der Follung'. It consists of six staves. The first two staves are a grand staff with treble and bass clefs. The next two staves are a grand staff with treble and bass clefs. The last two staves are a grand staff with treble and bass clefs. The music is written in a simple, early style with various note values and rests.

Handwritten musical score on seven staves. The notation includes treble clefs, various note values (quarter, eighth, and sixteenth notes), rests, and dynamic markings. The second staff contains the instruction *ppianissimo assai*. The fourth staff has a measure with a fermata and the number *18.* written above it. The seventh staff ends with a large, decorative flourish.

Mk-Inv 15521

