

Consumtionstabelle von Wien, vom Jahr 1733.

Es ist in diesem Jahr consumirt worden.

I. An zahmen Vieh.

Ochsen	=	=	=	=	=	40029
Rübe	=	=	=	=	=	1110
Kälber	=	=	=	=	=	1660
Mutterkälber	=	=	=	=	=	64196
Schaafe	=	=	=	=	=	7724
Junge Hammel	=	=	=	=	=	35400
Lämmer	=	=	=	=	=	169612
Grosse Schwelne	=	=	=	=	=	142
Mittlere detto	=	=	=	=	=	29103
Ordinaire detto	=	=	=	=	=	17680
Frischlinge	=	=	=	=	=	33725
Grosse Gvansfärfel	=	=	=	=	=	7104
Kleine detto	=	=	=	=	=	0802



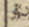
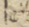
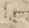

JULIUS. Heumonat.

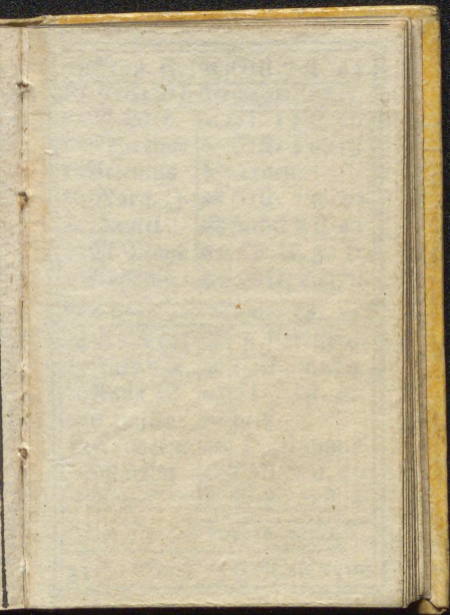
1 Theodor.  ☉ U. 4 U. 6
2 M. Heim.  ☿ Donnerwet.

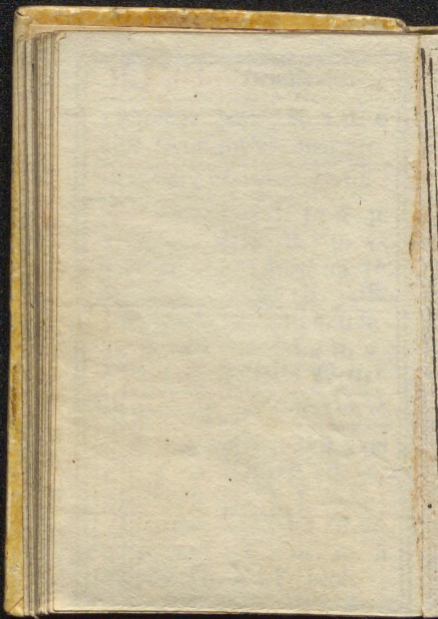
Von falschen Propheten. Matth. 7

3 **37** Eulog.  ♊ El. 15 st 46
4 Udalr.  ♊ ☉ U. 7 u. 53
5 Domitian  ♋ Nechl 8st. 16.
6 Isaias  ♋ ☉ U. 34 M.
7 Willibald.  ♋ Nachmittag
8 Willianus  ♌ ☉ U. 4 U. 9
9 Briccius  ♌ kühl Wetter

Vom ungerath. Saushalt. Luk. 16.

10 **38** Amel  ♌ El 15st. 38m
11 M. 6 P.  ♍ ☉ U 4U 11.
12 Heinrich  ♍) Apocaea
13 Margare.  ♎ Nechl. 8st. 26
14 Bonaven  ♎) 2U. 40. u.
15 Apost. Eb  ♏ sehr heis.





16 Scap. K. | ☼ | ○ U. 7 u. 44

Jes. weint über Jerusalem. Luk. 19.

17 **B**Alex. | ☼ | El. 15 st 26

18 Arnoldus | ☼ | ○ U. 4 u. 18.

19 Arsenius | ☼ | Regen.

20 Marg. J. | ☼ | ○ U. 7 u. 40.

21 Daniel | ☼ | Rechl. 8 st. 42

22 M. Magd. | ☼ | ○ U. 32 fr

23 Liborius | ☼ | ○ i 8 2u37n

Vom Phar und Köllner. Luk. 18.

24 **B**io Ebr. | ☼ | D Perigea.

25 Jakob U. | ☼ | ○ U. ... u. 26m

26 Anna M. | ☼ | El. 15 st. 4.

27 Camillus | ☼ | hetß

28 Innocent. | ☼ | ☾ 4U23m.n

29 Martha | ☼ | ○ U 7 u. 29.

30 Abd. Gen | ☼ | Rechl 9 st. 4

Vom Baum u Tauben Mark. 7.

31 **B**ii Ja. 9 | ☼ | ○ U. 4u. 23m.

2. An Viktualien.

Hilfsfrüchte	=	40526	3/8	M.
Weiß. u. Rod.		119623		=
Gerste	= = =	88002		=
Haber	= = =	531081		=
Mund- u. Sem-				
melmehl	=	723990	5/8	Et.
Doblmehl	=	194711		=
Rockenmehl	=	972518	1/2	=
Grtes	= = =	19658	1/8	=

3. An Heu und Stroh.

Heu	= = = =	20660	Fuhren
Stroh	= =	1263180	Schaab

4. An Inschl. 20940 E. 15 P.

5. An Breñh. 297133 1/2 Kl.

6. An Getränken.

Inländ. Weine	482250	1/2	E.
Ausz. u. bung.	11793	3/4	=
Bier	= = =	447574	3/4 =