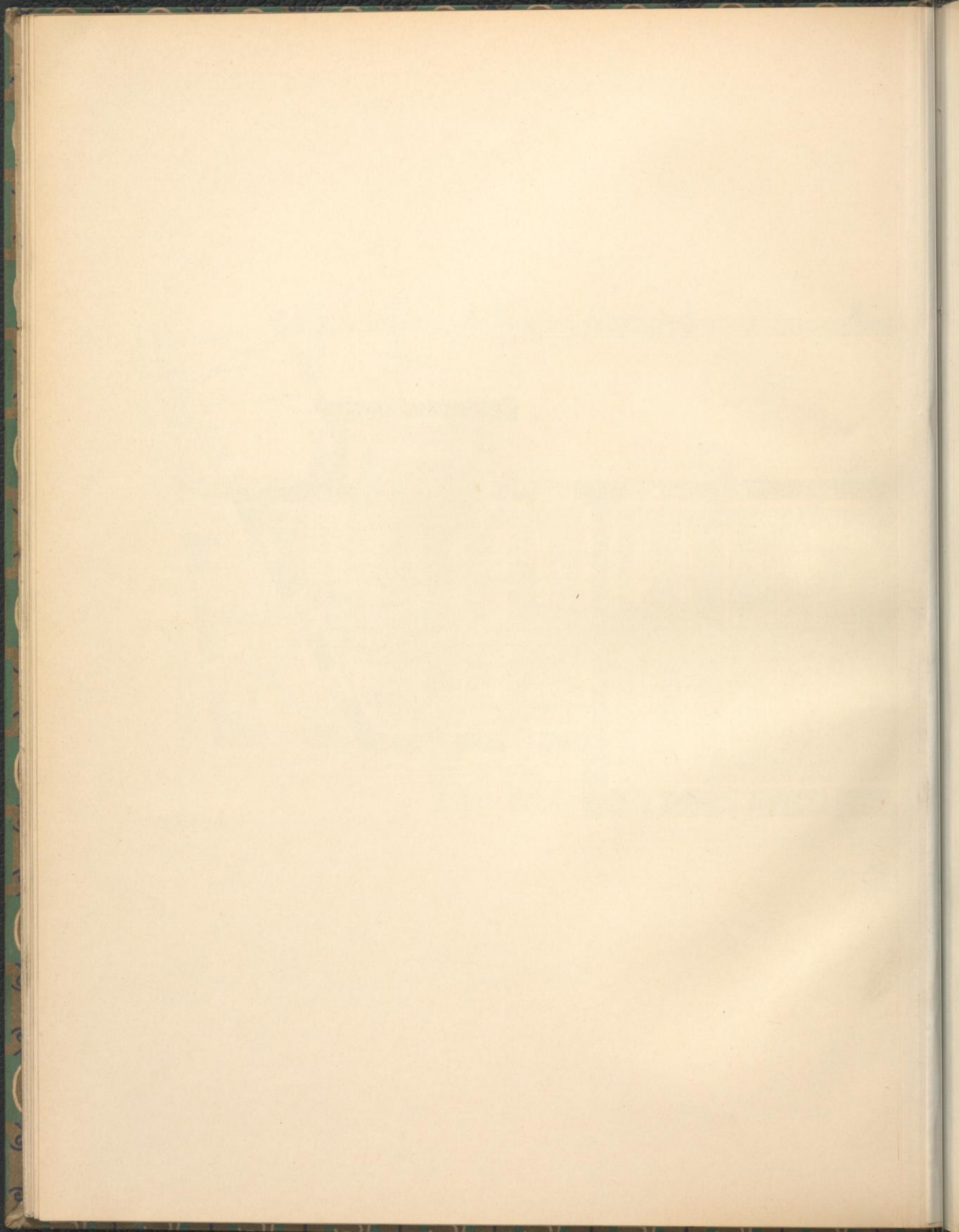
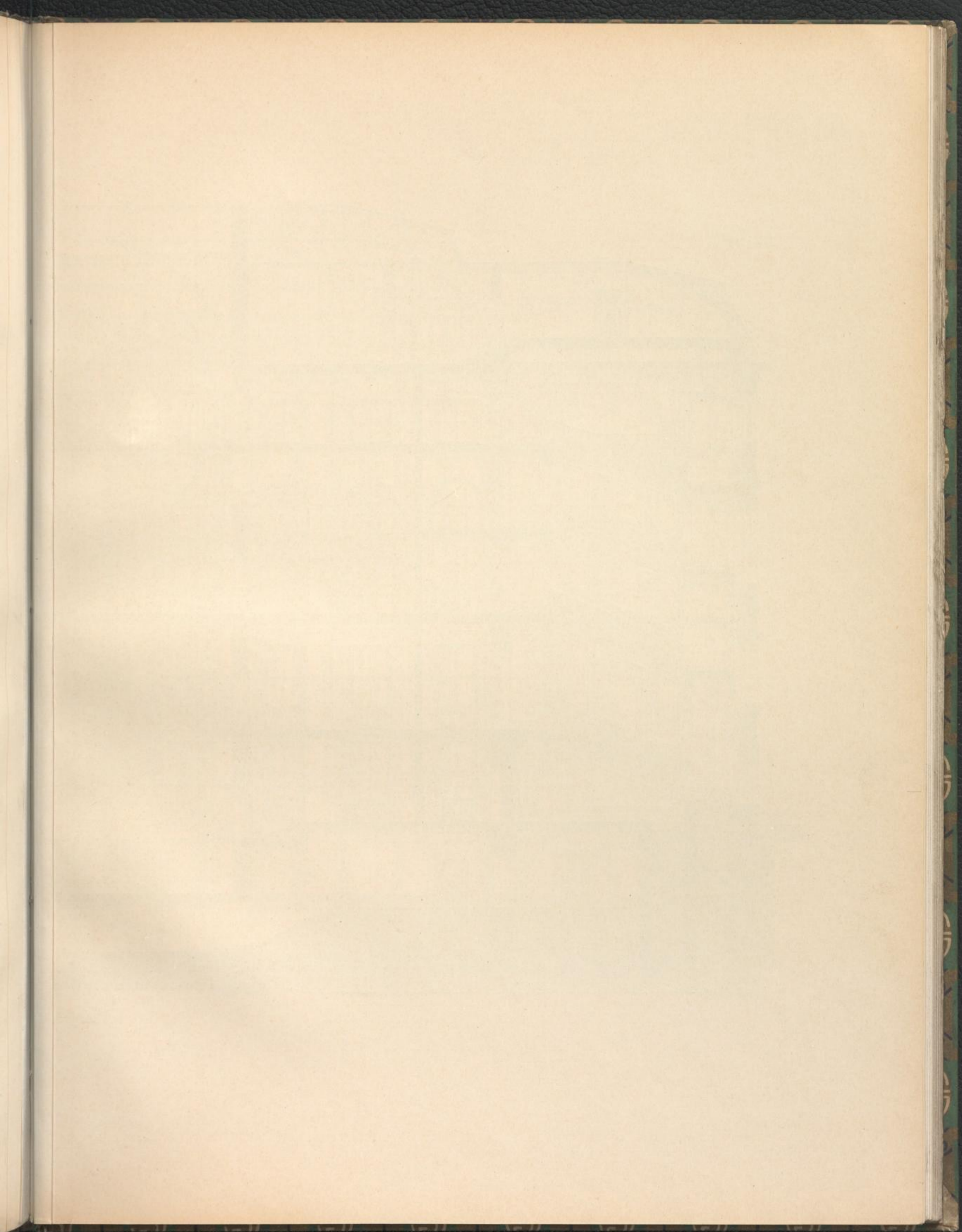


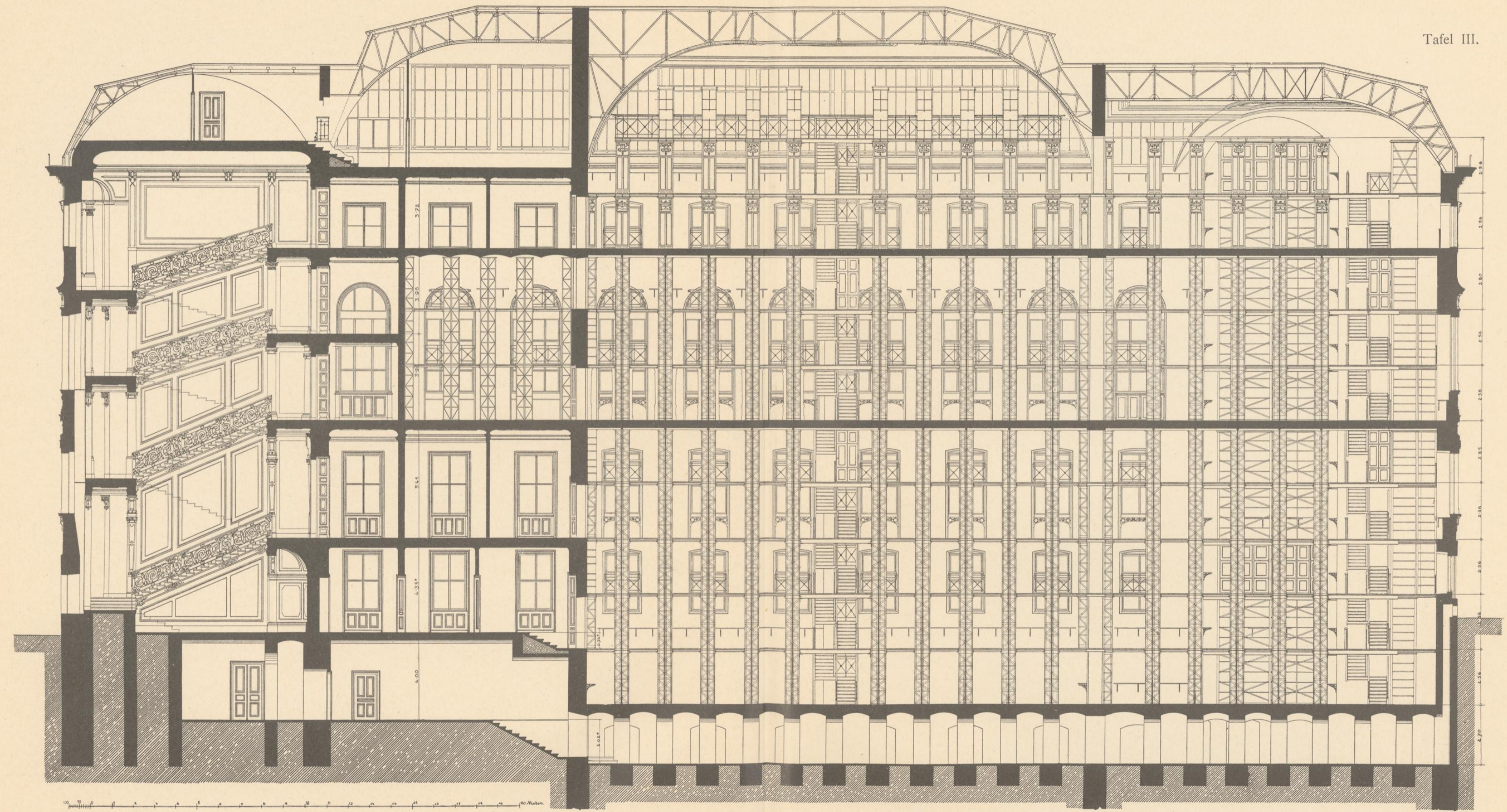
Grundriß des Erdgeschosses.  
(Zweites Lagergeschoß.)





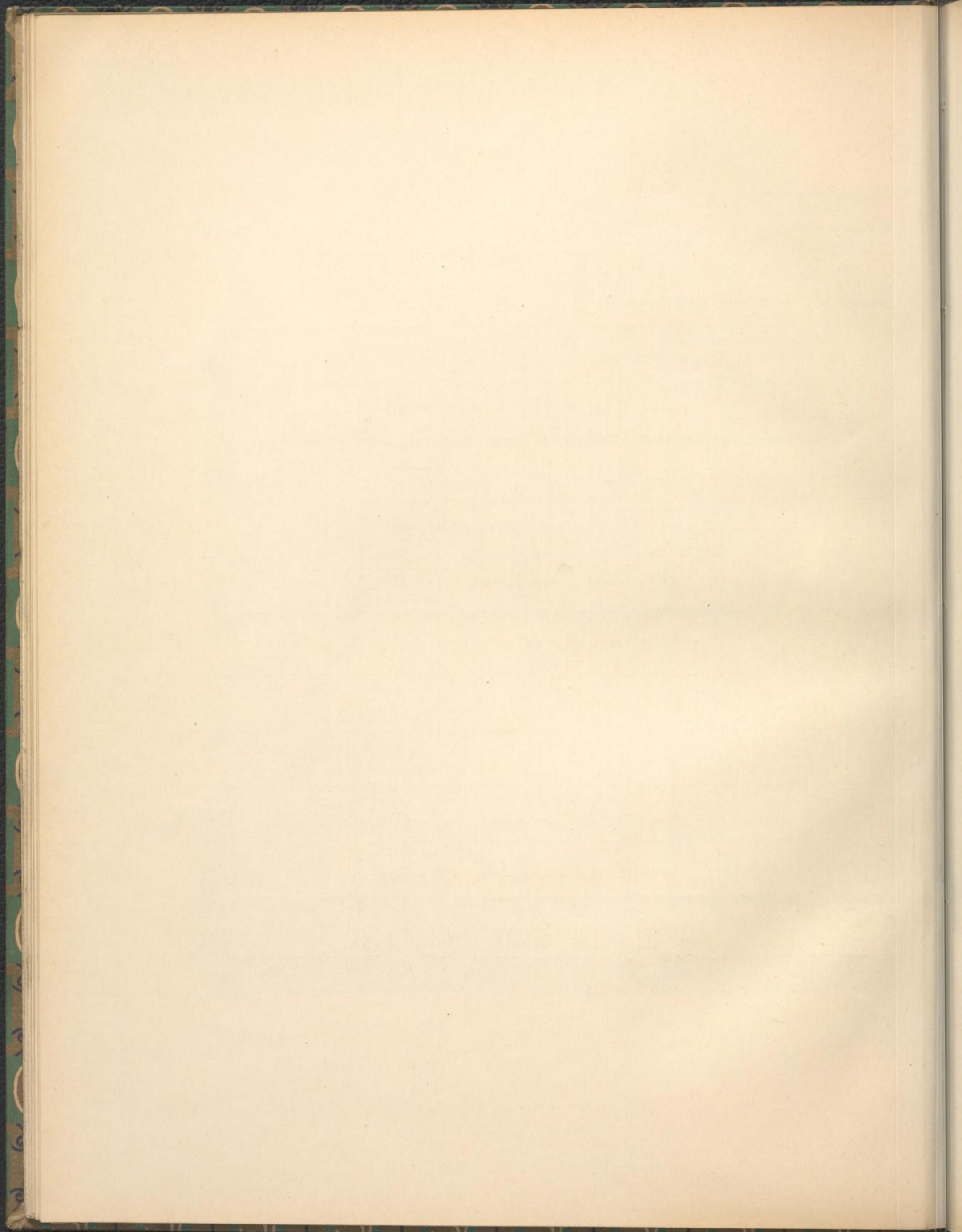




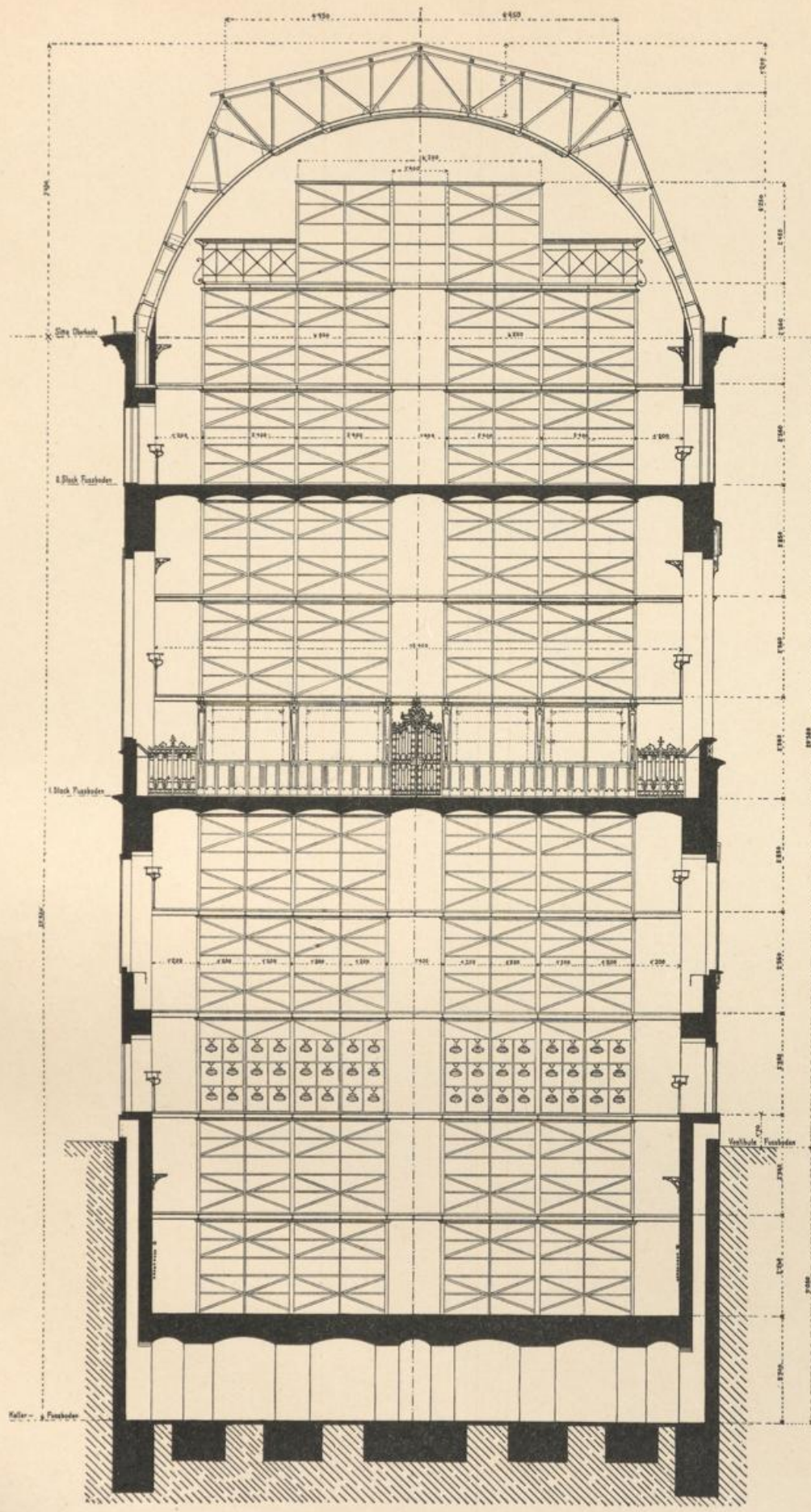


Längenschnitt.

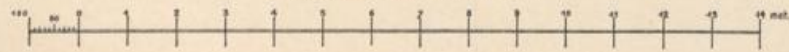






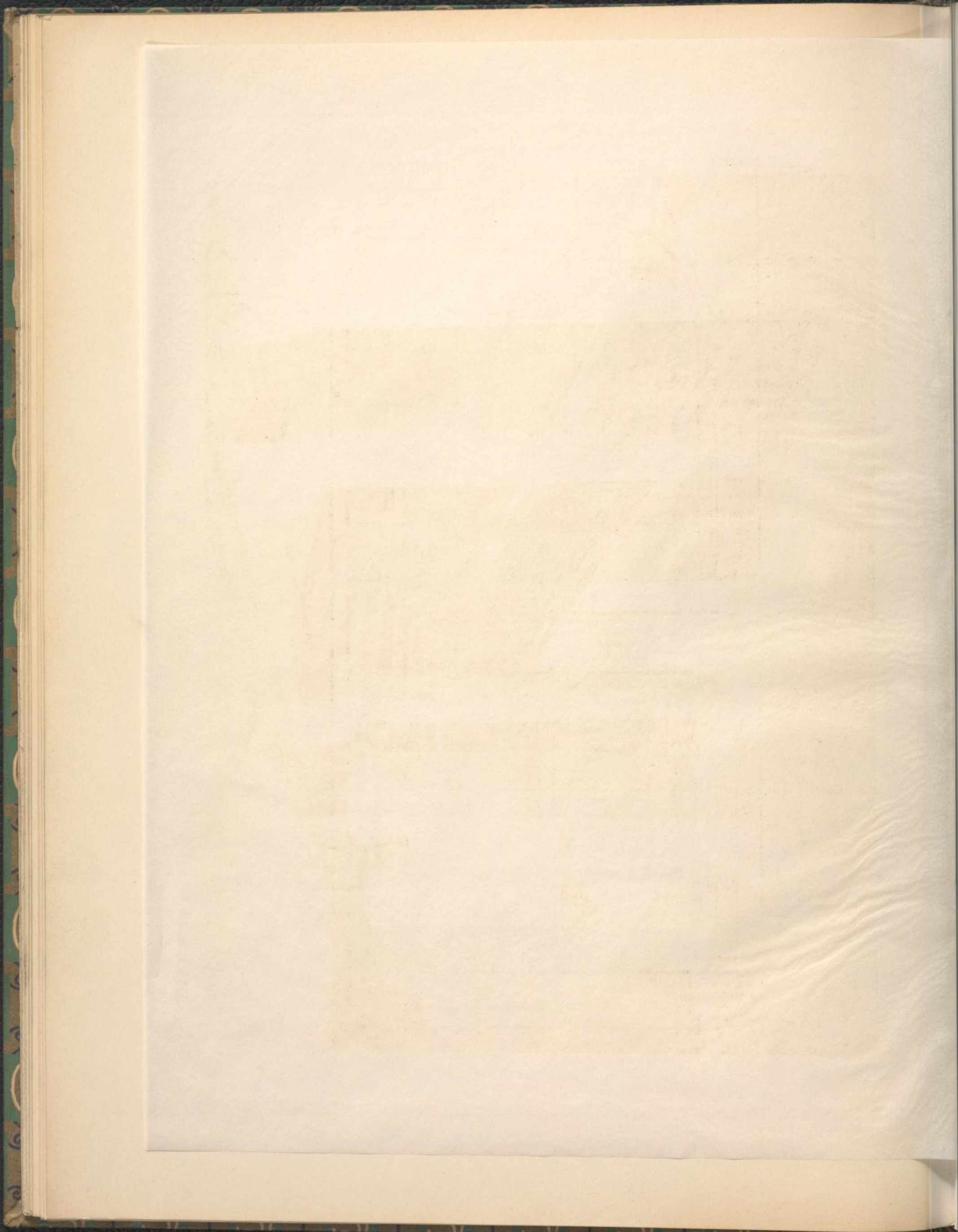


MASSTAB IN 1/50 NATÜRLICHER GRÖSSE



Querschnitt.



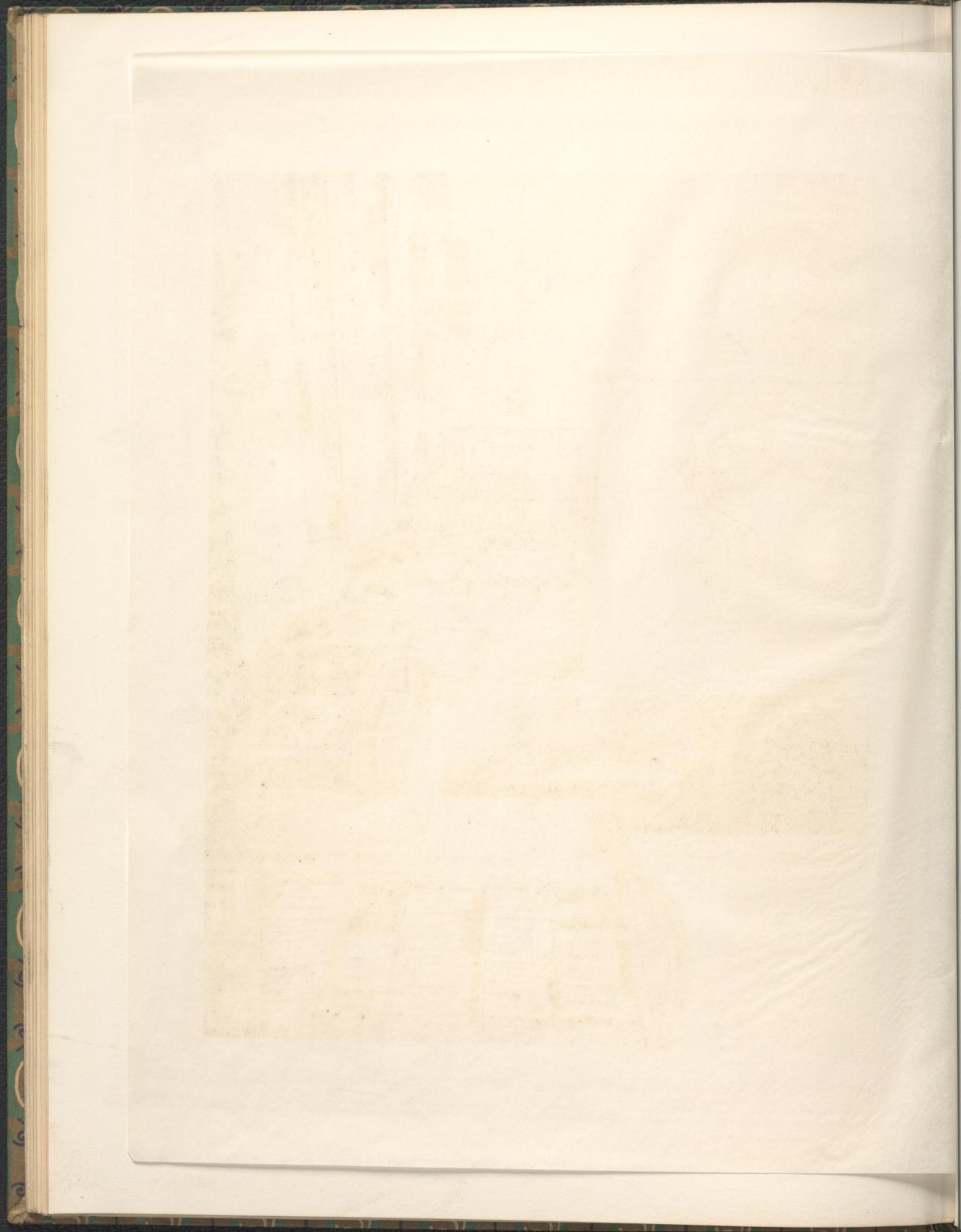






EINTRITTSHALLE



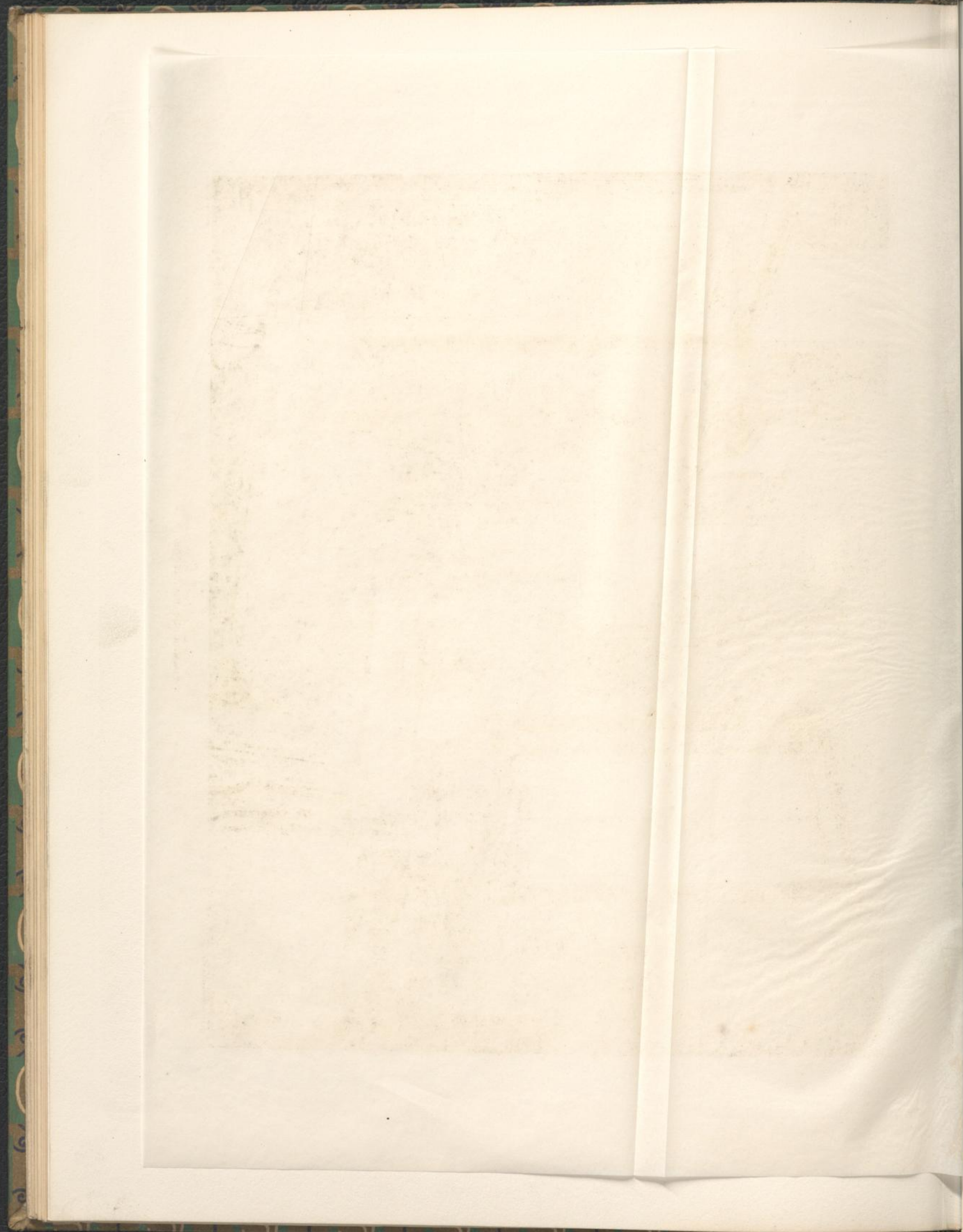






BENUTZERZIMMER. I.







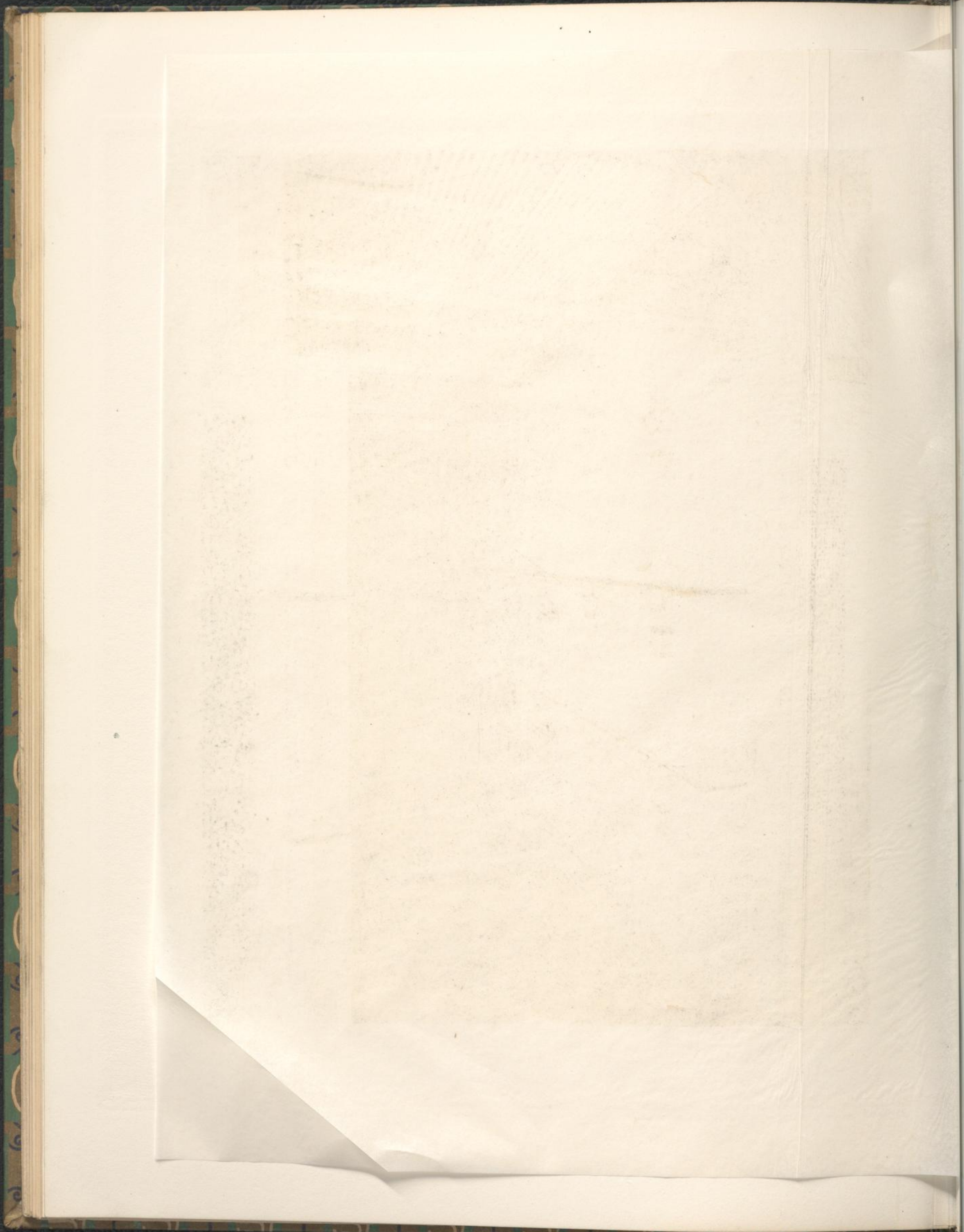


Druck von L. Pissart.

ZIMMER DES DIREKTORS.

Photogr. von M. Frenkenstein, Wien.







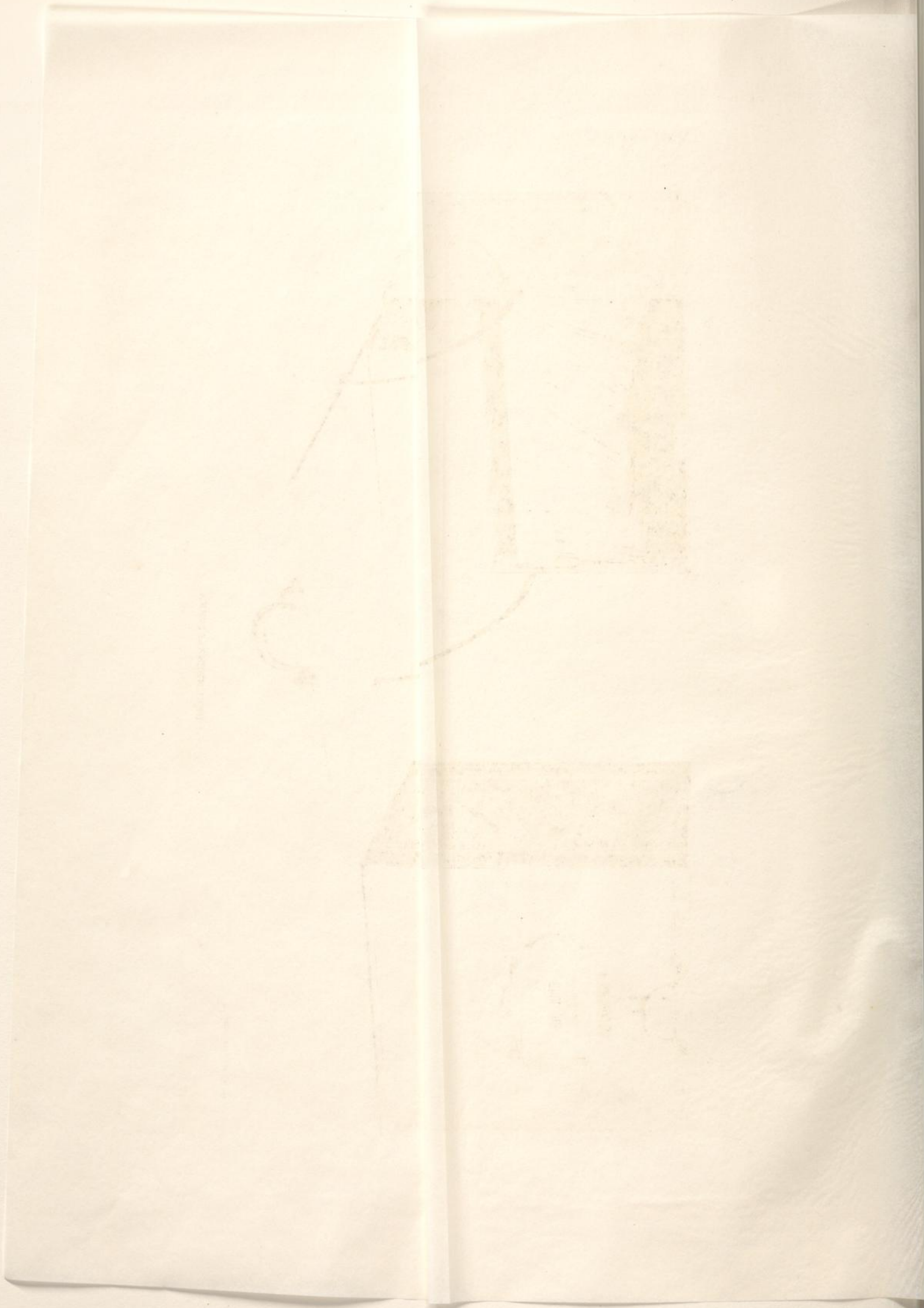


Belager von M. Frankenstein, Wien.

Druck von L. Pisani.

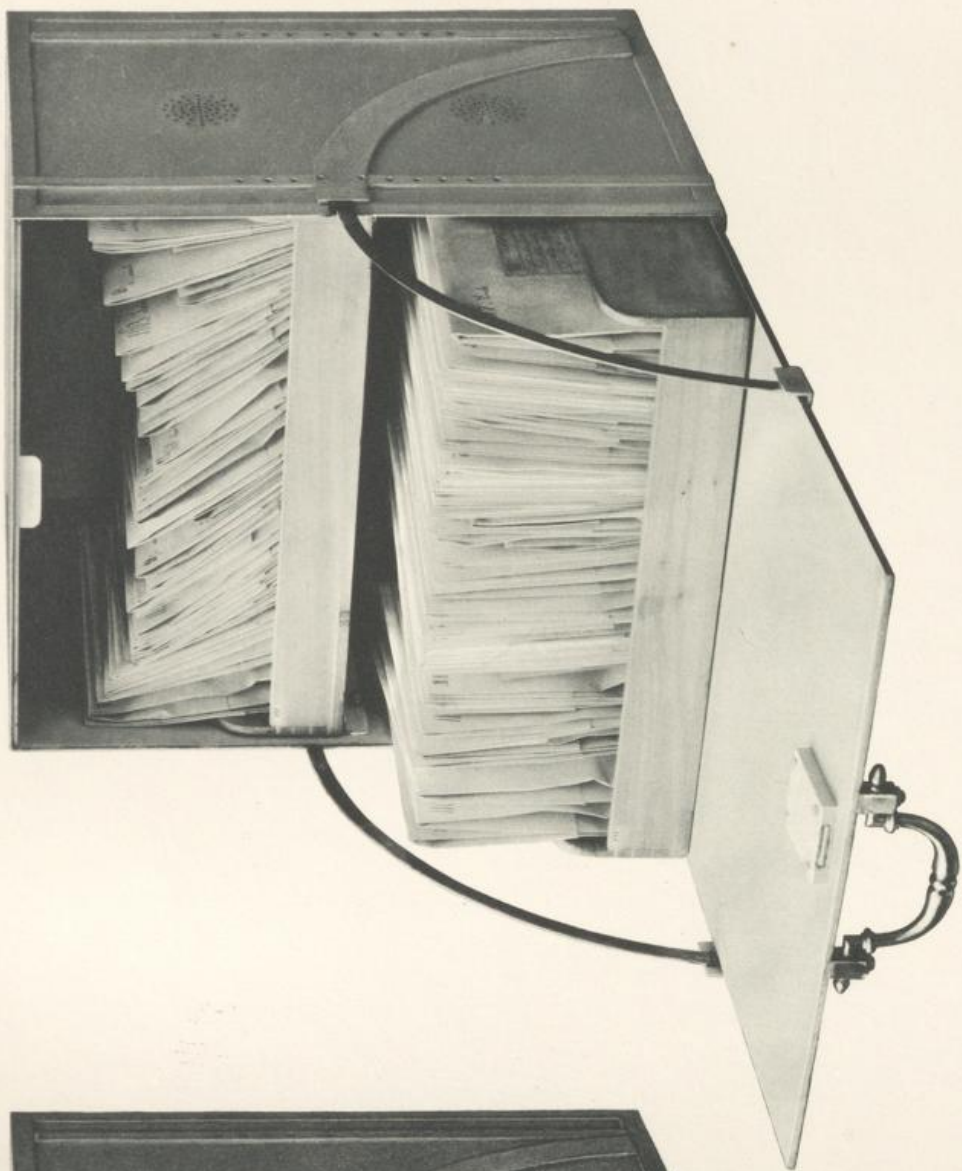
AUS DEM DRITTEN GESCHOSS.





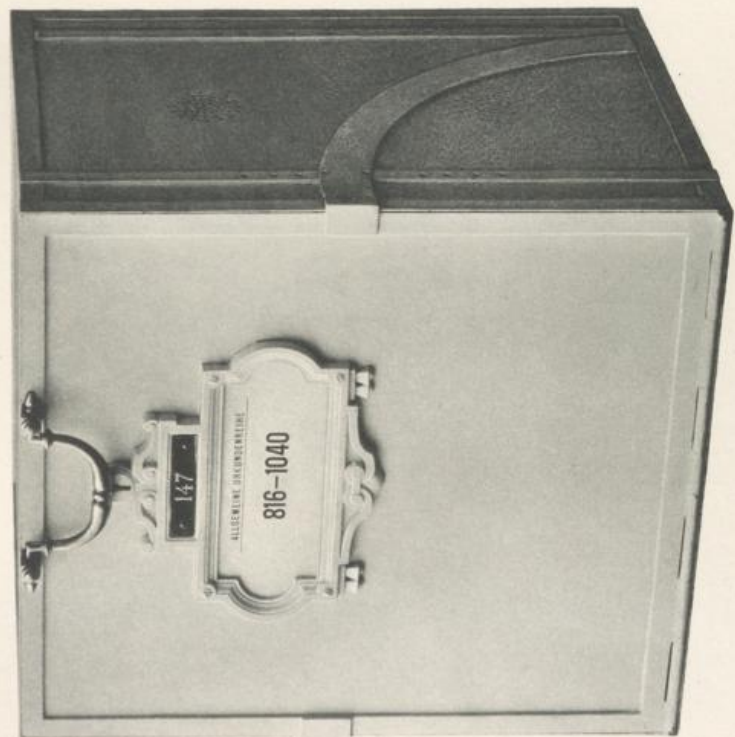


Tafel IX



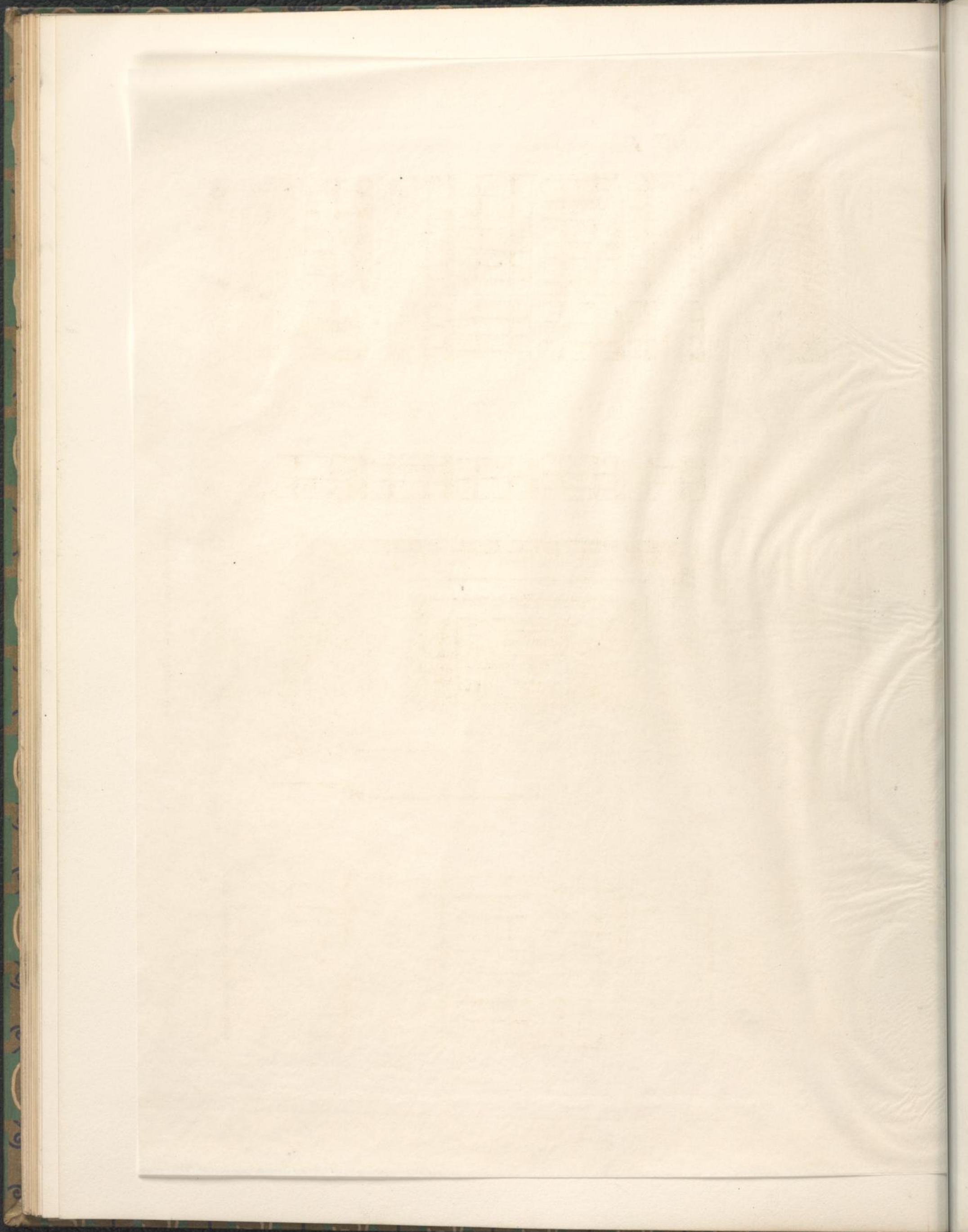
Druck von L. Pissni.

URKUNDENKÄSTCHEN.

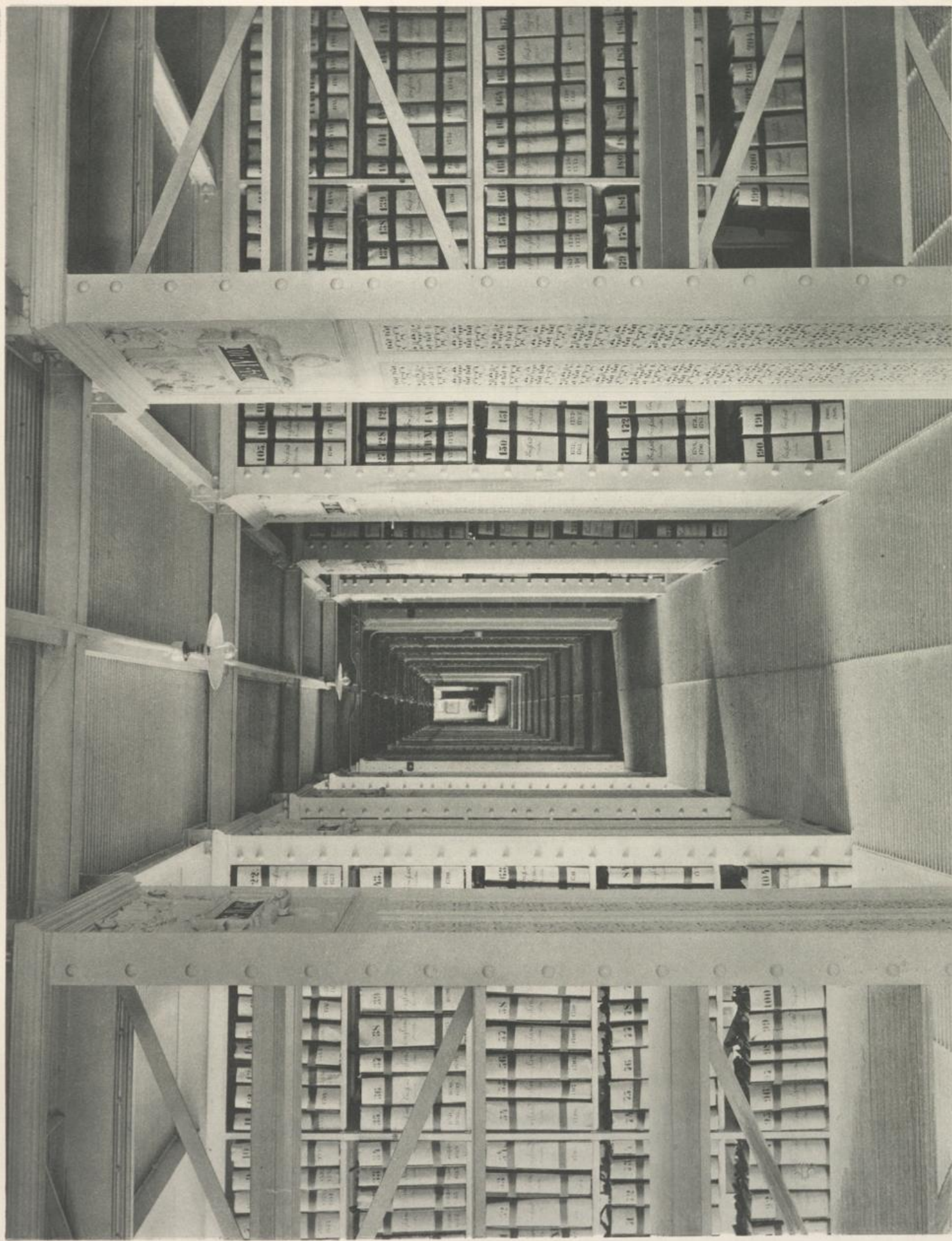


Herzog von M. Frankenstein, Wien.







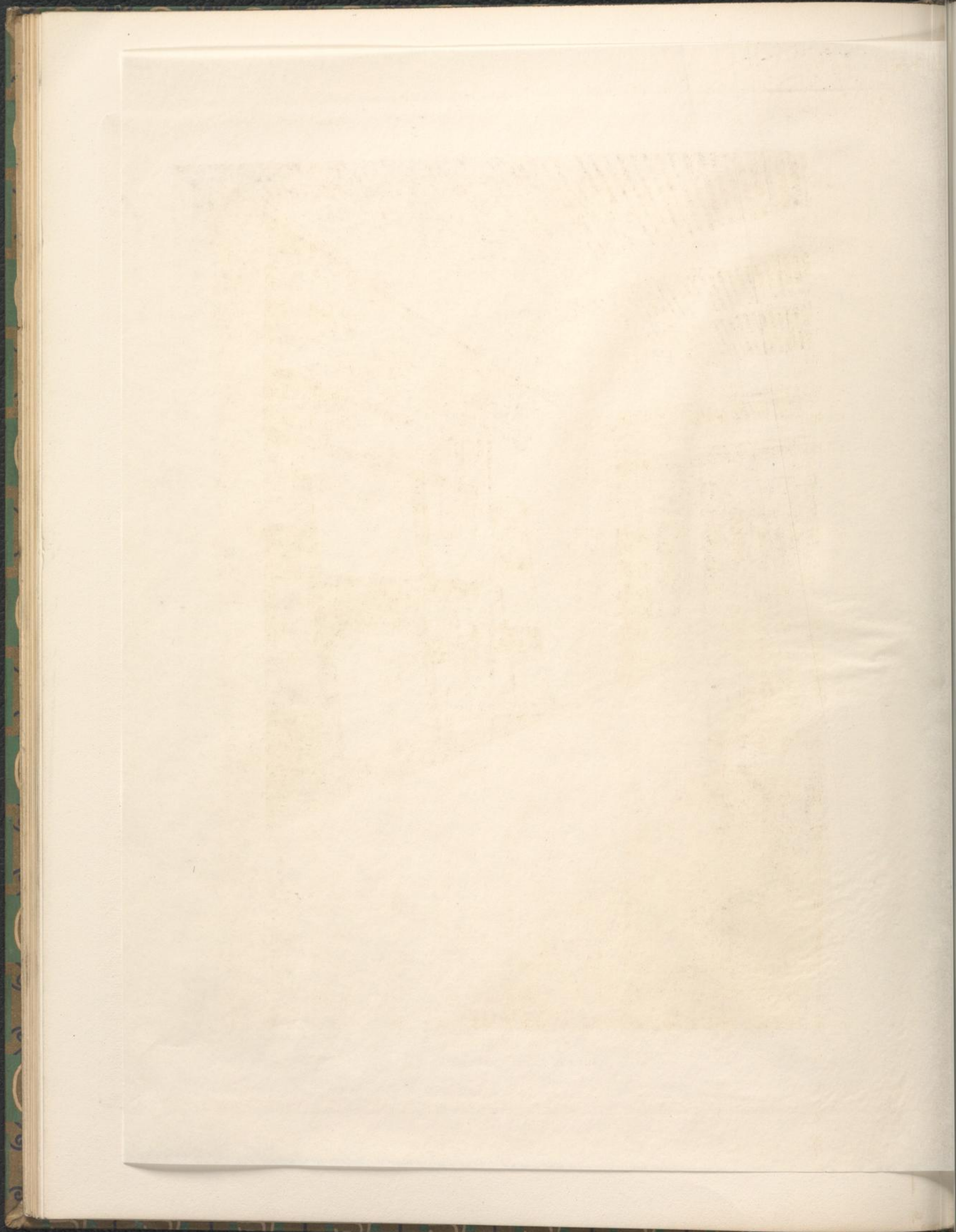


Druck von L. Pissani.

Helogr. von M. Frankenstein, Wien.

MITTELGANG IM VIERTEN LAGERGESCHOSS.







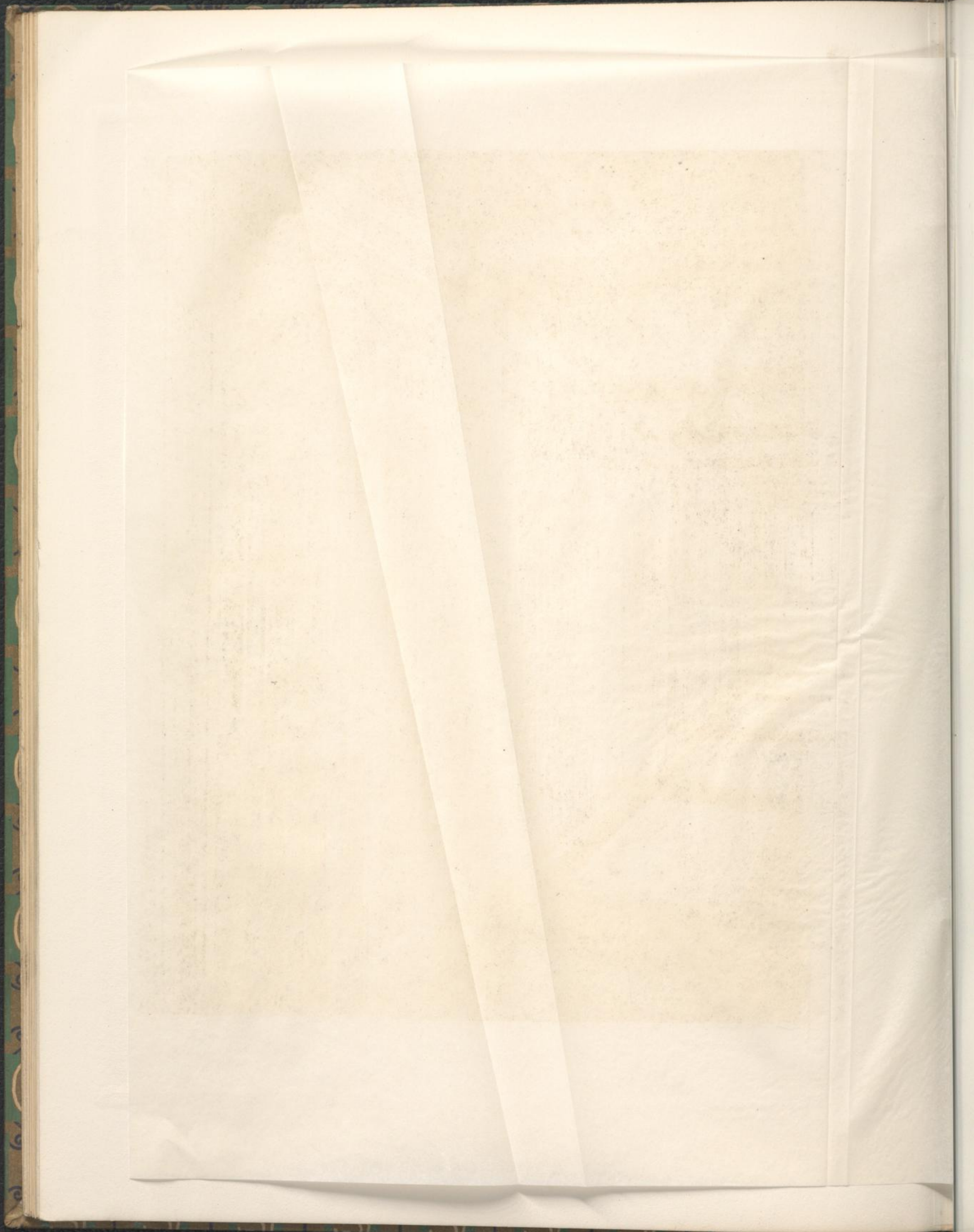


Helogr. von M. Frankenstein, Wien

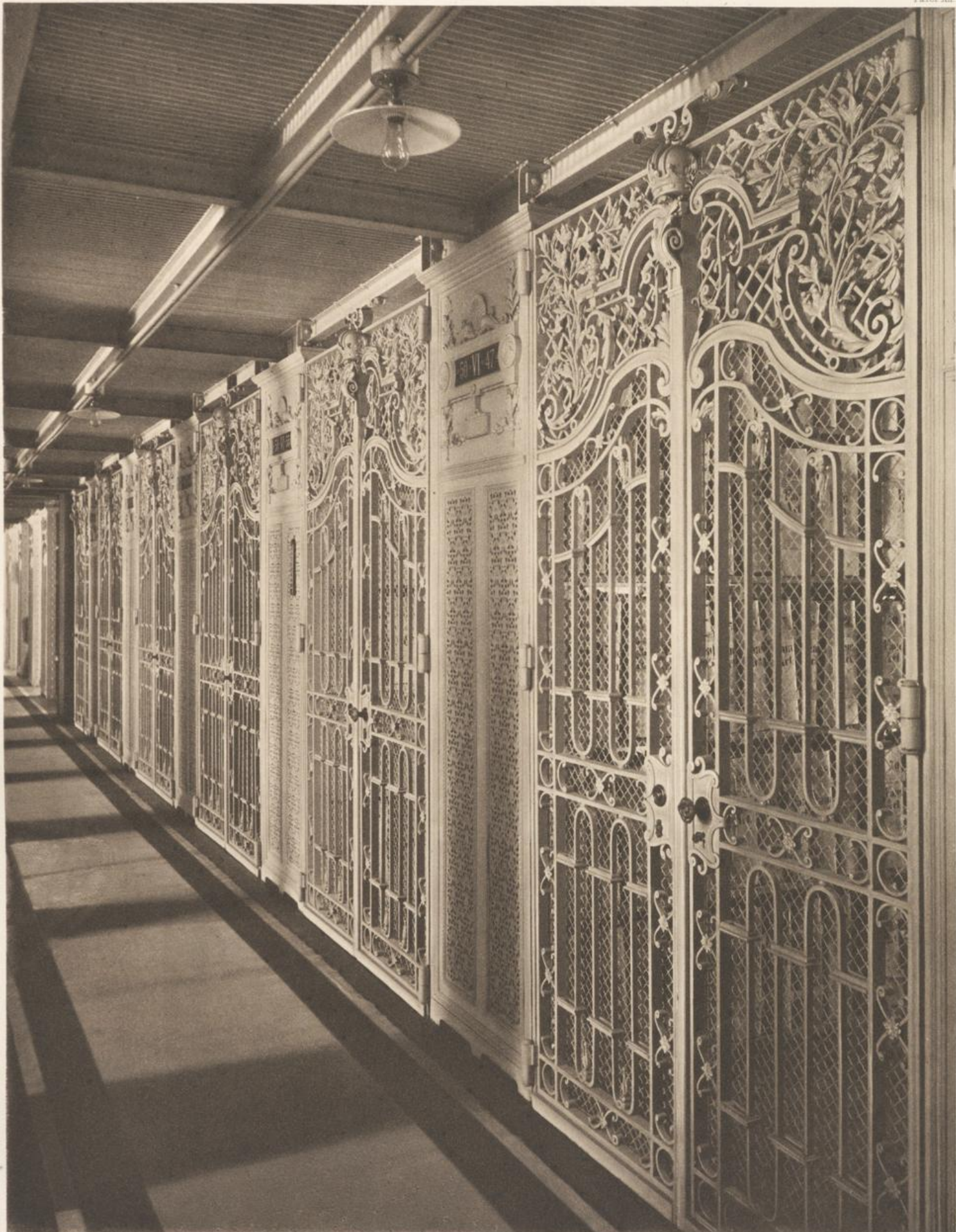
Druck von L. Pisan

AUS DEM AUSSTELLUNGSRAUME.





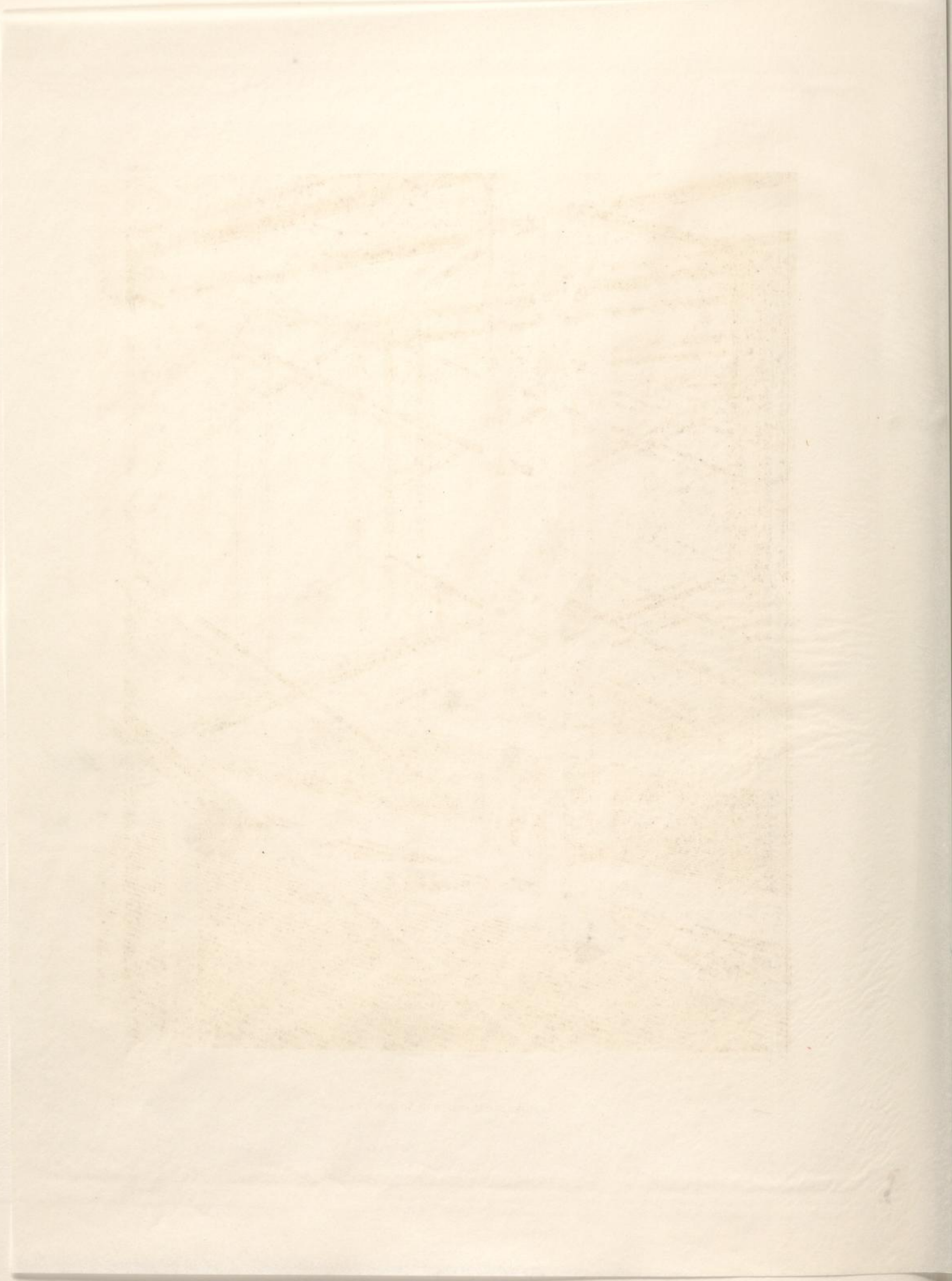




Hallenge von M. Frankenstein, Wien.

Druck von L. Pisani.









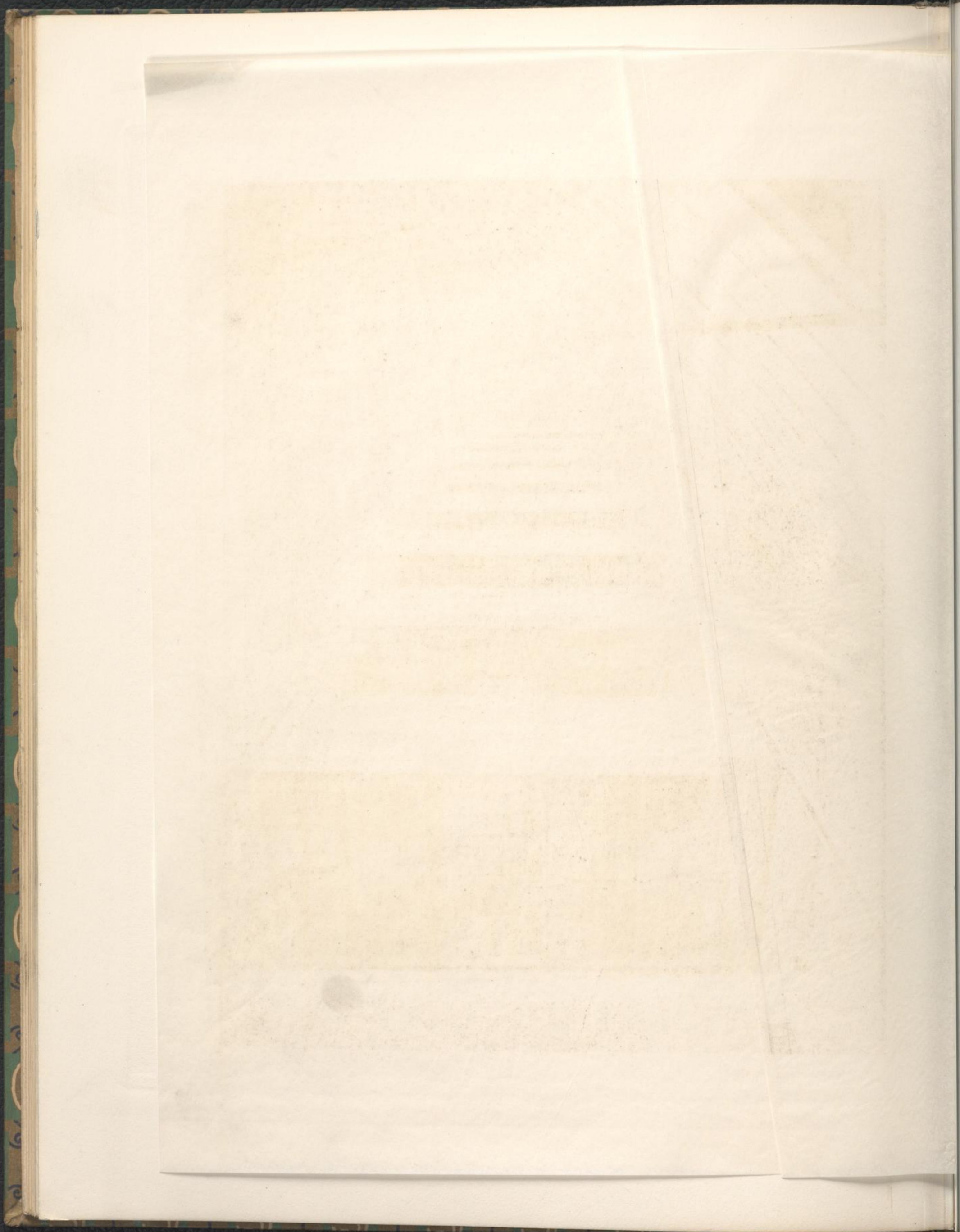
Helogr. von M. Frankenstein, Wien.

Aufnahme von A. Moll, Wien.

Druck von L. Pisani.

ELFTES GESCHOSS (VOR DER VOLLENDUNG.)







Tafel XIV

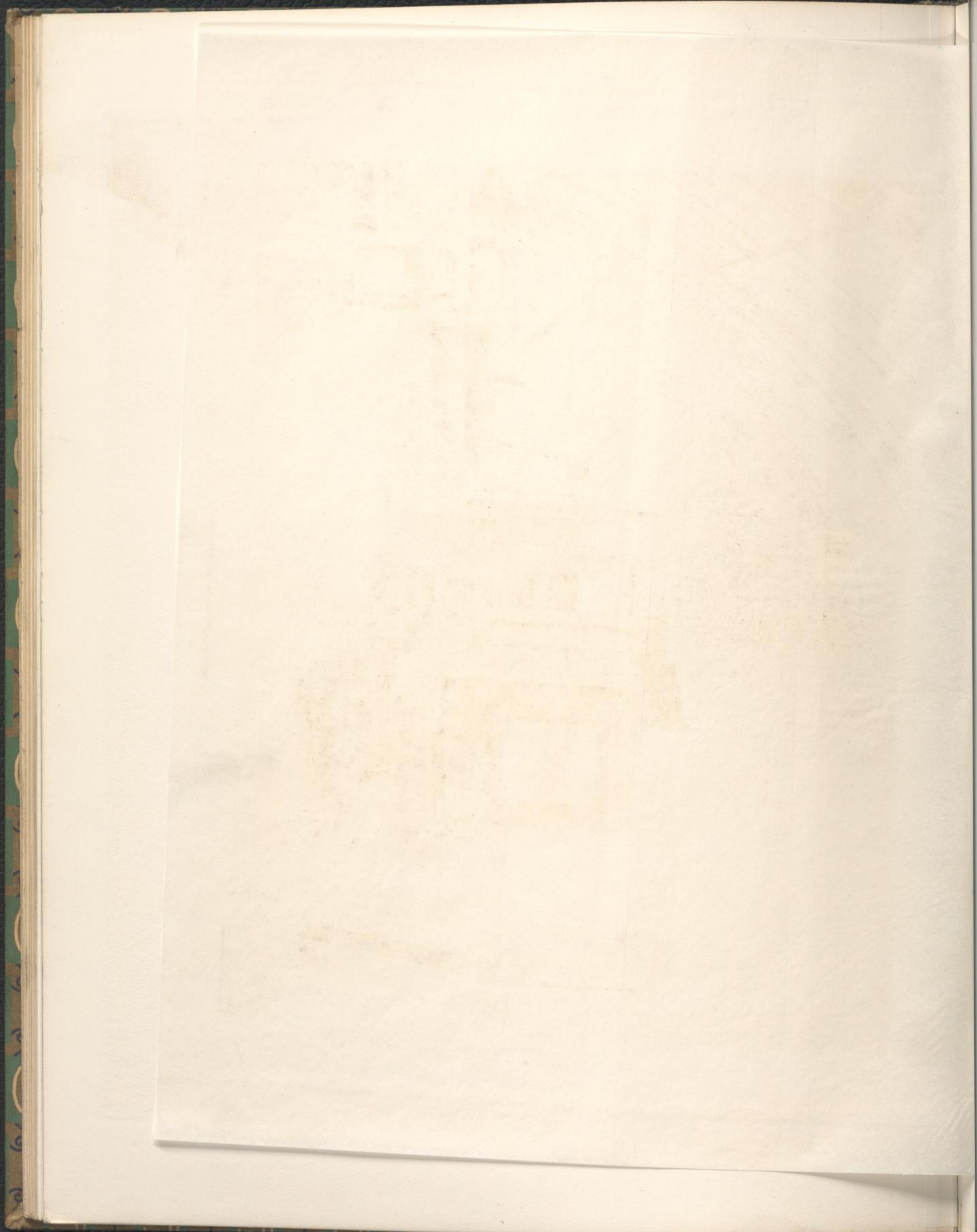


Decke von L. Prantl.

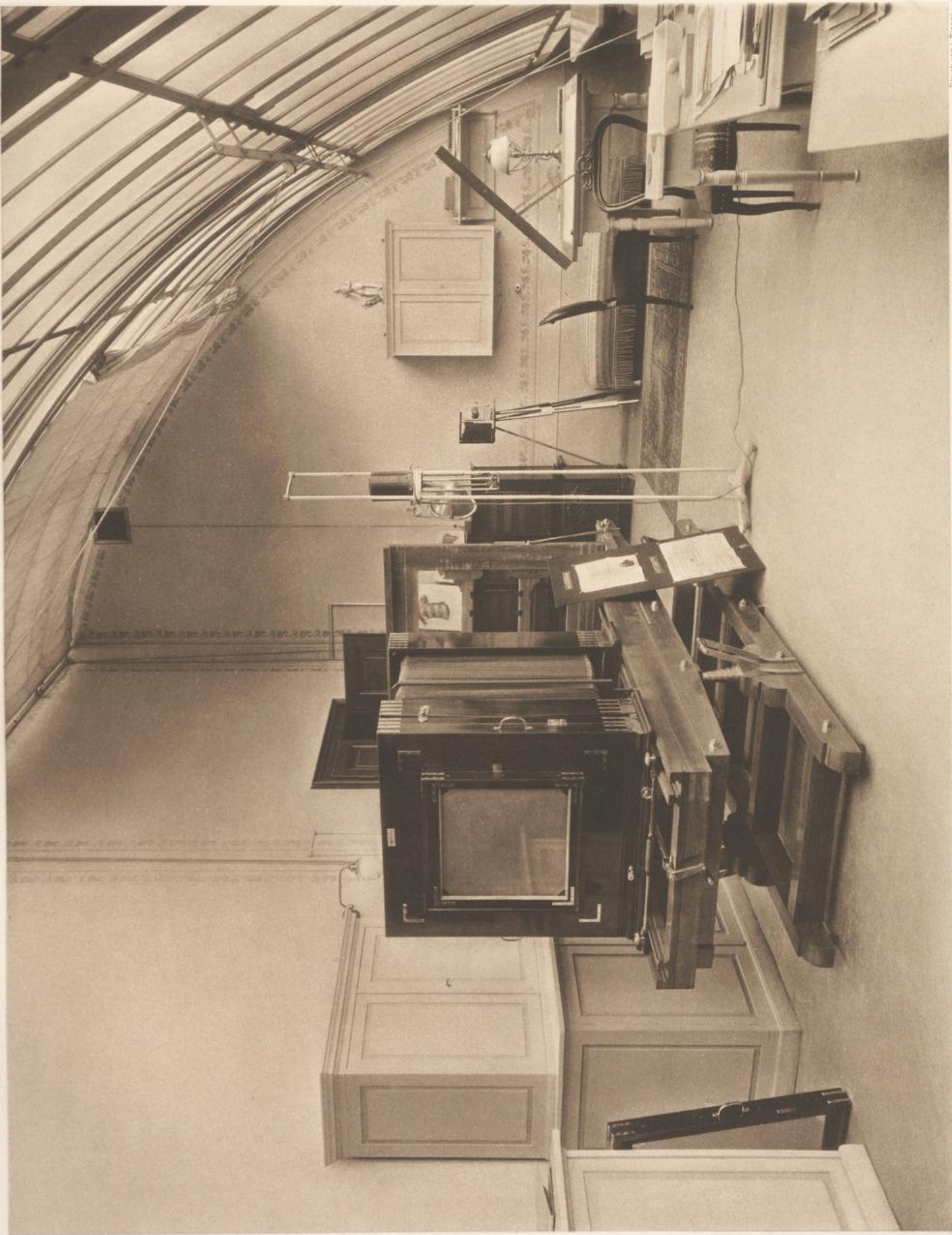
Hellege von M. Frankenstein, Wien.

ELFTES GESCHOSS.









Druck von L. Pisani

PHOTOGRAPHISCHER AUFNAHMESRAUM

Belogin von M. Frankestein, Wien.



