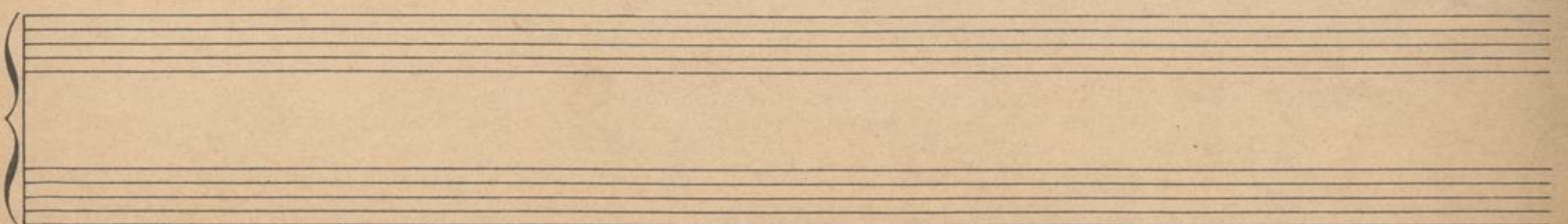
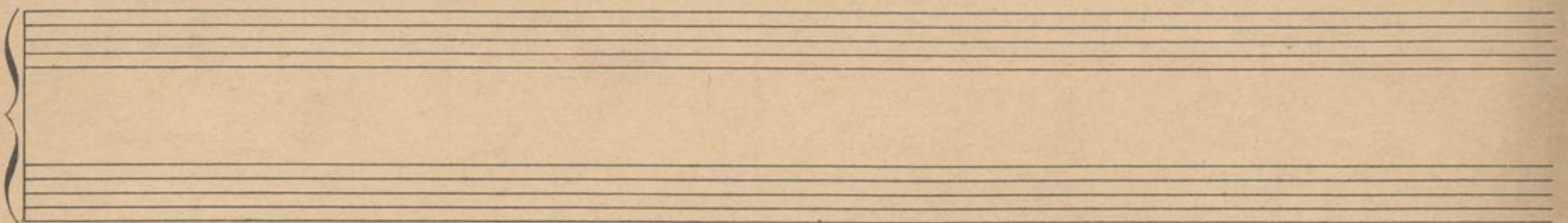
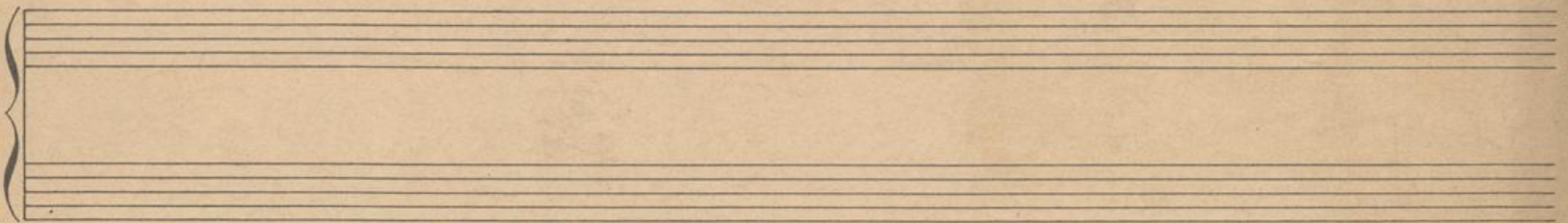
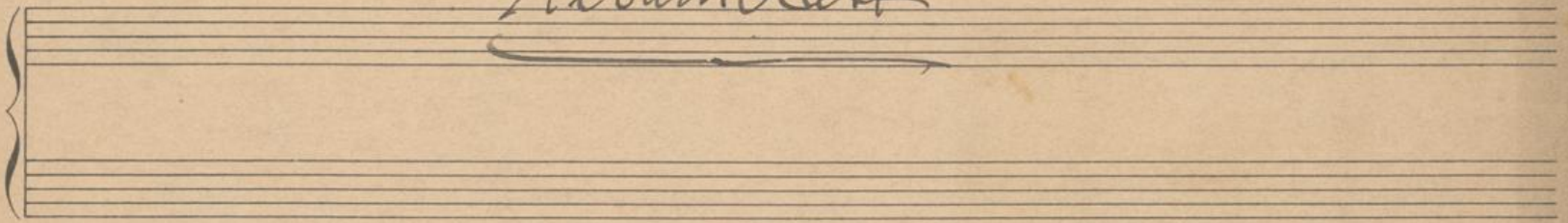
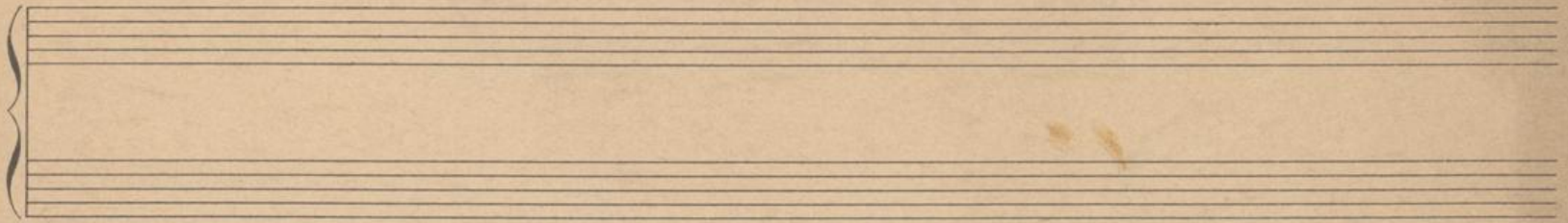
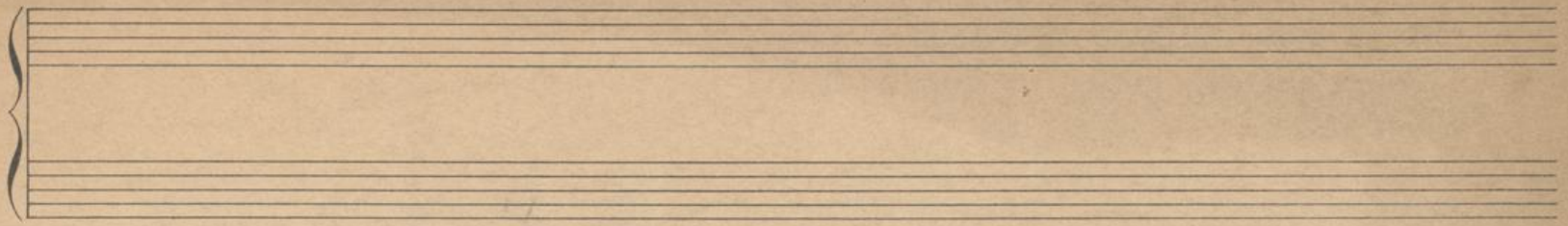


MH 9920/c



# Albumblatt.

*Allegretto con intimo sentimento.*

Fr. Karli Posa

Handwritten musical notation for the first system, featuring a treble and bass clef with various notes and rests.

Handwritten musical notation for the second system, including dynamic markings like 'p' and 'ritardando'.

Handwritten musical notation for the third system, including the tempo marking 'a tempo'.

Handwritten musical notation for the fourth system, including dynamic markings like 'p'.

Handwritten musical notation for the fifth system, including dynamic markings like 'pp' and 'rit'.

Handwritten musical notation for the sixth system, including dynamic markings like 'pp' and 'rit'.

*riten.*

*a tempo*

MH 20.9920



*legato*

Handwritten musical notation for the first system, featuring a treble and bass clef with various notes and rests. The notation includes a treble clef on the upper staff and a bass clef on the lower staff. The music is written in a key with two flats (B-flat and E-flat). The first system contains several measures of music, with some notes beamed together. There are some handwritten annotations, including "rit." at the end of the system.

Handwritten musical notation for the second system, including a repeat sign and dynamic markings like "p" and "mf". The notation continues with a treble and bass clef. A repeat sign is present in the middle of the system. Dynamic markings include "p" (piano) and "mf" (mezzo-forte). There are also some handwritten annotations, including "Gute" and "Per diu".

Handwritten musical notation for the third system, showing complex chordal textures and some scribbled-out passages. The notation continues with a treble and bass clef. There are several measures of music, with some notes beamed together. There are some handwritten annotations, including "rit." and "p".

*Altes langsam.*

Handwritten musical notation for the fourth system, starting with a new section marked "Altes langsam". The notation continues with a treble and bass clef. The music is written in a key with two flats. There are some handwritten annotations, including "p" and "mf".

Handwritten musical notation for the fifth system, continuing the "Altes langsam" section. The notation continues with a treble and bass clef. There are some handwritten annotations, including "p" and "mf".

Handwritten musical notation for the sixth system, concluding the piece. The notation continues with a treble and bass clef. There are some handwritten annotations, including "p" and "mf".

MH-nr. 9920



Handwritten musical notation, first system. It consists of two staves, treble and bass clef. The notation includes various notes, rests, and accidentals. A large, dense scribble of ink covers a significant portion of the middle of the system, obscuring the underlying notes.

Handwritten musical notation, second system. It consists of two staves, treble and bass clef. The notation includes various notes, rests, and accidentals, continuing the piece from the first system.

Handwritten musical notation, third system. It consists of two staves, treble and bass clef. The notation includes various notes, rests, and accidentals, continuing the piece from the second system.

Handwritten musical notation, fourth system. It consists of two staves, treble and bass clef. The notation includes various notes, rests, and accidentals. The signature "T. Tennyson" is written in the right margin of this system.

Handwritten musical notation, fifth system. It consists of two staves, treble and bass clef. The notation includes various notes, rests, and accidentals, continuing the piece from the fourth system.

Handwritten musical notation, sixth system. It consists of two staves, treble and bass clef. The notation includes various notes, rests, and accidentals, continuing the piece from the fifth system.

Handwritten musical notation, first system. It consists of two staves, likely for piano and violin/viola. The music is in a key with two flats (B-flat and E-flat) and a common time signature. The notation includes various note values, rests, and dynamic markings.

Handwritten musical notation, second system. It consists of two staves. The notation continues from the first system, showing complex rhythmic patterns and chordal structures.

Handwritten musical notation, third system. It consists of two staves. The notation includes many beamed notes and rests, indicating a fast or intricate passage.

Handwritten musical notation, fourth system. It consists of two staves. The notation shows a continuation of the complex rhythmic and harmonic material.

Handwritten musical notation, fifth system. It consists of two staves. The notation includes some dynamic markings and phrasing slurs.

Handwritten musical notation, sixth system. It consists of two staves. The notation includes dynamic markings such as *pp* (pianissimo) and *rit* (ritardando). At the bottom of the page, there are handwritten notes: *Pw* and *fa*.

Handwritten musical notation on a grand staff. The notation includes notes, rests, and dynamic markings such as *pp* and *mf*. There are several annotations, including a large 'S' above the first system and a circled 'X' at the end of the second system. The music appears to be in a minor key and features complex rhythmic patterns.

Handwritten musical notation on a grand staff. The notation includes notes, rests, and dynamic markings such as *pp* and *mf*. A large circled 'X' is present at the end of the system, indicating a specific point in the music. The notation is dense and includes various articulation marks.

Handwritten musical notation on a grand staff. The notation includes notes, rests, and dynamic markings such as *pp* and *mf*. A large circled 'X' is present at the end of the system. The notation is dense and includes various articulation marks.

Empty grand staff consisting of two staves joined by a brace on the left side.

Empty grand staff consisting of two staves joined by a brace on the left side.

Empty grand staff consisting of two staves joined by a brace on the left side.